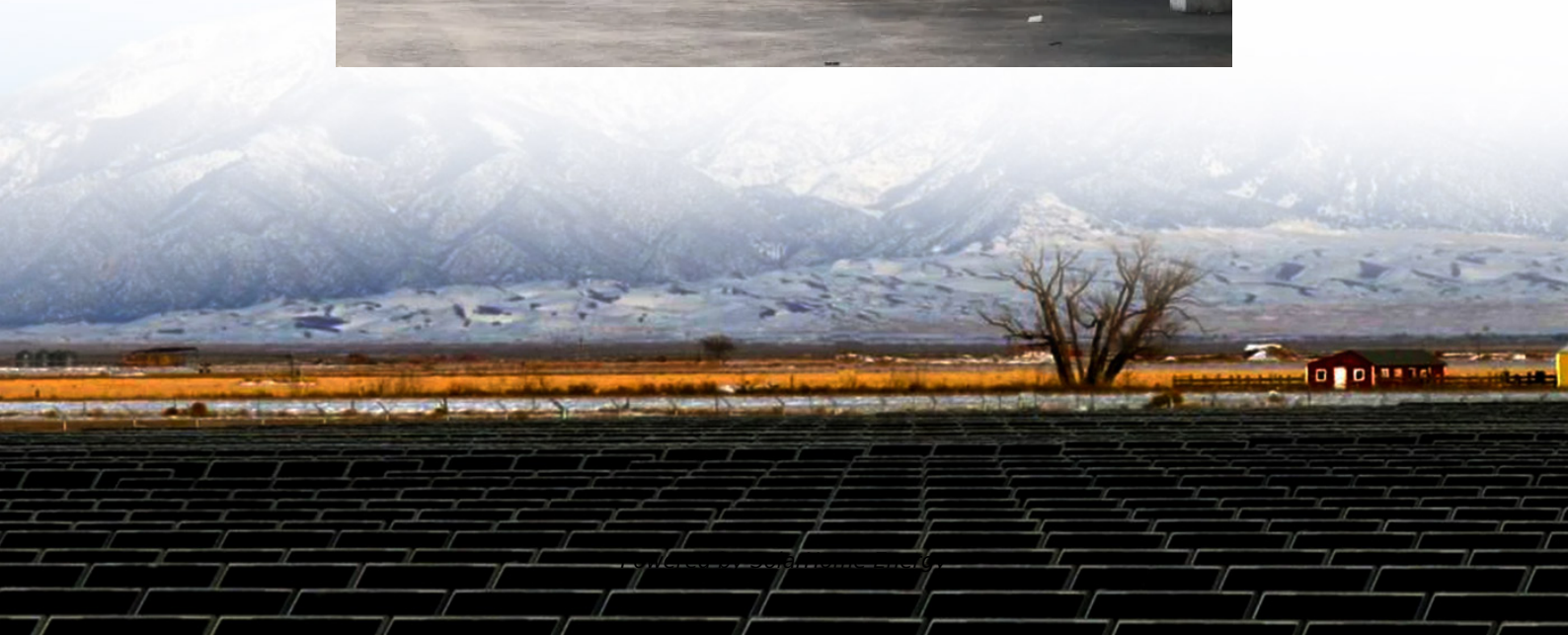


Communication base station signal tower battery





Overview

The latest variants of li-ion telecom batteries include a sophisticated battery management system. The BMS keeps a check on all the critical performance metrics of the battery and ensures a maximum power output to the base stations. As for remote sites, the privilege of online monitoring nullifies the.

Lithium-ion batteries have improved charge efficiency and, in turn, have a longer cycle life. It is highly beneficial in terms of saving time and cost as the battery banks last.

One of the major drawbacks of lead-acid batteries is the slow charging procedure, which means more generator run time and decreased fuel efficiency for telecom applications. So.

As it is established, the high efficiency, high energy density, and increased charge acceptance account for lower generator runtime and lesser fuel cost. Additionally, the reduced site.

Fast charge acceptance means decreased generator runtime. Remote sites which rely on generator power can be assisted by batteries to limit.



Communication base station signal tower battery



What are base station energy storage batteries used for?

They provide backup power for telecommunications towers during outages, ensuring uninterrupted communication services by maintaining ...

Cellular Networks, Cells, and Base Stations -- EITC

A cell site (or cell tower, or cellular base station) is a cellular-enabled mobile device site where antennae and electronic communications equipment are placed - typically ...



348V Lifepo4 Battery for Telecom Tower Telecom ...

The construction of mobile communication base stations is an important part of social security. The stability of communication base stations is related to ...

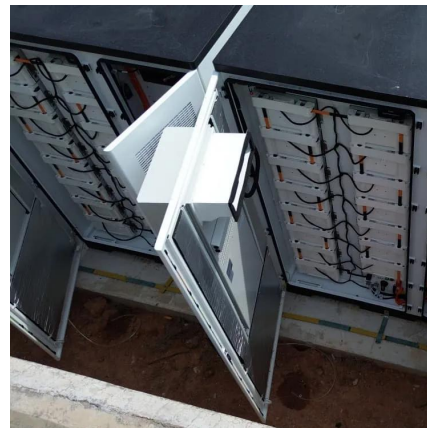


[A Field Guide To The North American ...](#)

These are used to distribute the base station equipment between the tower and the ground. The RRH itself is a small rectangular box on the

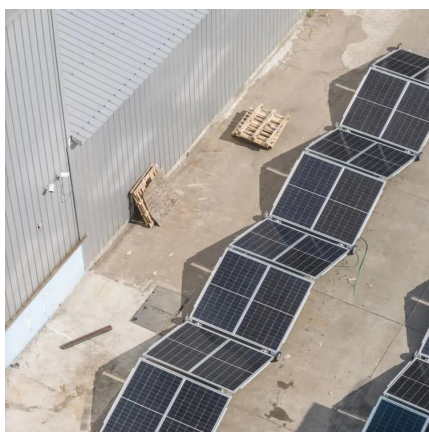


...



Smart BaseStation

Smart BaseStation(TM) is an intelligent communication mast that can provide remote power for a range of DC and AC off-grid applications eg rural broadband.



Improved Model of Base Station Power System for the ...

An improved base station power system model is proposed in this paper, which takes into consideration the behavior of converters. And through ...



What Powers Telecom Base Stations During Outages?

Telecom batteries for base stations are backup power systems using valve-regulated lead-acid (VRLA) or lithium-ion batteries. They ensure uninterrupted connectivity ...

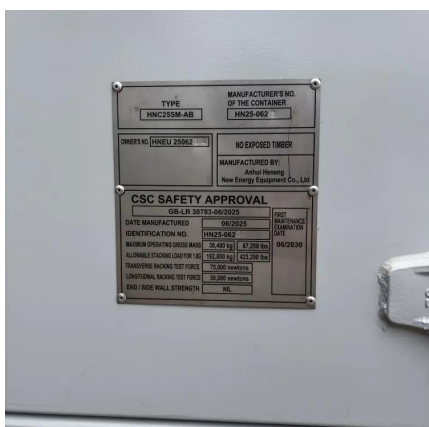




Figure6: base station communication tower
Antennas are used to send and receive signals. It can focus the signal sent from the radio frequency unit in the correct direction and ...



Discover the 48V 100Ah LiFePO4 battery pack for telecom base stations: safe, long-lasting, and eco-friendly. Optimize reliability with our design guide.



Whether it is a remote base station or a signal tower in a bustling city, the GF series ensures unimpede Hot Tags : telecom battery Front Terminal Battery Front Access Battery ...



BS (Base Station)

A base station (BS) is a key component of modern wireless communication networks, providing the interface between wireless devices ...



What are Cell Towers and How Do They Work?

A cell tower, also known as a cell site, or a Base Transceiver Station, is a structure that produces a cellular signal as a "cell" in a cellular ...

Communication Base Station Backup Battery

Communication base station backup batteries are designed to provide a consistent and reliable power supply during electricity outages. This ensures ...





Reliable Communication Base Stations, Cheap Communication ...

Whether it is a remote base station or a signal tower in a bustling city, the GF series ensures unimpeded Hot Tags : telecom battery Front Terminal Battery Front Access Battery ...

Lithium ion battery for telecom industry/towers/backup systems

The basic function of a telecom tower battery is to provide uninterrupted power to the base stations to keep the availability of services intact during a power outage.



50kw 60kva Communication Base Station Standby Power ...

50kw 60kva Communication Base Station Standby Power Emergency Power Supply Diesel Generator Silent Shell Using Ricardo Engine, Find Complete Details about 50kw 60kva ...

Communication Base Station Energy Solutions

During the day, the solar system powers the base station while storing excess energy in the battery. At night, the energy storage system discharges to supply power to the base station,

...



Communication Base Station Backup Battery

When natural disasters cut off power grids, when extreme weather threatens power supply safety, our communication backup power system with intelligent charge/discharge management and ...



Communication Base Station Energy Solutions

During the day, the solar system powers the base station while storing excess energy in the battery. At night, the energy storage system discharges to ...



Communication Base Station Backup Battery

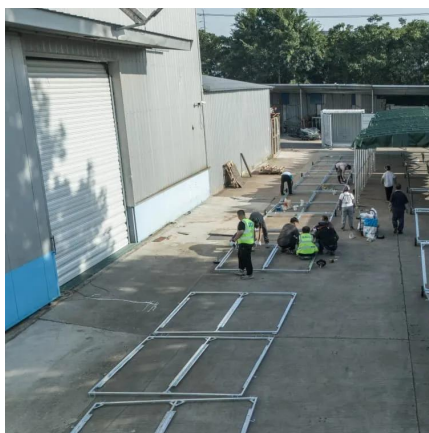
Communication base station backup batteries are designed to provide a consistent and reliable power supply during electricity outages. This ensures uninterrupted communication services, ...





How do communication base stations work

Introduction Communication base stations, also known as cell towers or mobile phone masts, are essential components of wireless communication networks. They allow mobile devices to ...



Communication base station

In summary, the tower energy storage battery plays a key role in improving the reliability of the power supply of the communication base station, energy saving and consumption reduction, ...

Telecom Base Station Backup Power Solution: Design ...

Discover the 48V 100Ah LiFePO4 battery pack for telecom base stations: safe, long-lasting, and eco-friendly. Optimize reliability with our ...



Communication base station

In summary, the tower energy storage battery plays a key role in improving the reliability of the power supply of the communication base station, energy ...



What Are Base Station Antennas? Complete Guide

Base station antennas are also known as cell site antennas and cellular antennas, and they are typically mounted on a tower or rooftop and connected to a base station through ...



100kw 125kva Communication Base Station Standby Power ...

100kw 125kva Communication Base Station Standby Power Emergency Power Supply Diesel Generator Silent Shell Using Ricardo Engine, Find Complete Details about 100kw 125kva ...



What are base station energy storage batteries used for?

They provide backup power for telecommunications towers during outages, ensuring uninterrupted communication services by maintaining operation when the main ...





5G Micro Base Station Lithium Battery Backup

Power your 5G micro base station with this 51.2V lithium battery. Ideal for telecom backup and remote tower use. Long life, compact, and BMS-equipped.

Blog -Communication Signal Tower Types & Design, Mobile Base Station

A self-supporting tower, also known as a free-standing tower or a lattice tower, is a type of structure used to support antennas, communication equipment, and other infrastructure for ...



Contact Us

For catalog requests, pricing, or partnerships, please visit:
<https://talbert.co.za>