

Communication base station EMS signal tower installation





Communication base station EMS signal tower installation



The cost of installing and maintaining and ERRCS

Because an ERRCS system renders the communication between emergency responders reliable and secure, the NFPA and AHJ mandate every property to have one. This ...

Cell & Internet Tower Installation & Maintenance , Tridon

Contact us today to learn more about tower installation and maintenance for your communication system. Whether the project is a protective shelter design and fabrication, or the construction ...



Cell Tower Construction , ANS Advanced Network ...

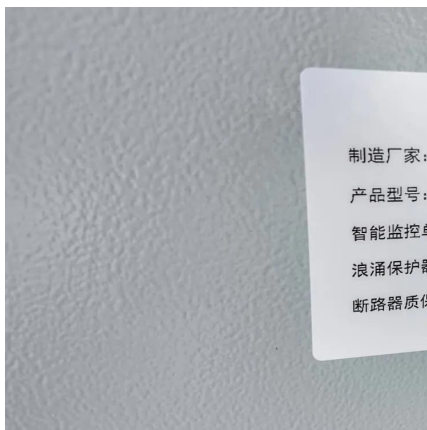
Complete Cell Site Construction and Tower Erection Services ANS provides efficient, safe, and cost-effective civil and tower construction services, ...

Blog -Communication Signal Tower Types & Design, Mobile Base ...

An Angular Steel Tower refers to a type of lattice tower used for various applications, including



power transmission, telecommunication, and broadcasting. It is characterized by its angular or ...

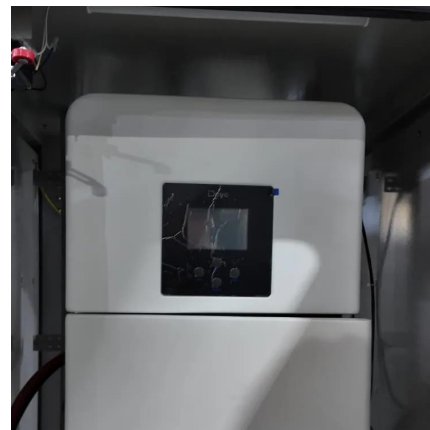


Process of Installing a Base Transceiver Station (BTS) ...

Installing a Base Transceiver Station (BTS) is a critical step in building mobile communication networks. Here's a step-by-step guide to the ...

The Base Station in Wireless Communications: The Key to ...

Base station, also known as BTS (Base Transceiver Station), is a key device in wireless communication systems such as GSM. Equipped with an electromagnetic wave ...



Land Mobile Radio (LMR) 101

A network is required to connect the different base stations to the same communications system. Repeaters are used to increase the effective communications range of handheld portable ...



Communication base station

Communication base stations are one of the core nodes of modern communication networks and require uninterrupted power supply to maintain ...



The cost of installing and maintaining and ERRCS

Because an ERRCS system renders the communication between emergency responders reliable and secure, the NFPA and AHJ mandate ...

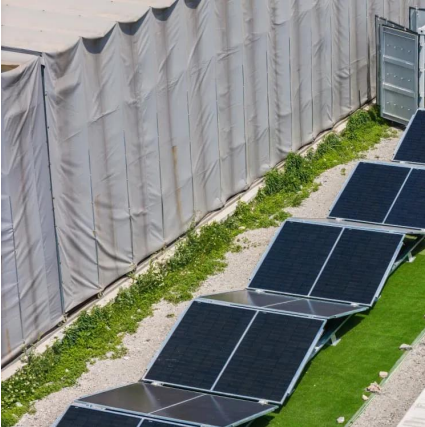
Blog -Communication Signal Tower Types & Design,Mobile Base Station

A rooftop tower, also known as a rooftop base station or rooftop site, refers to a telecommunication tower or antenna system that is installed on the rooftop of a building or ...



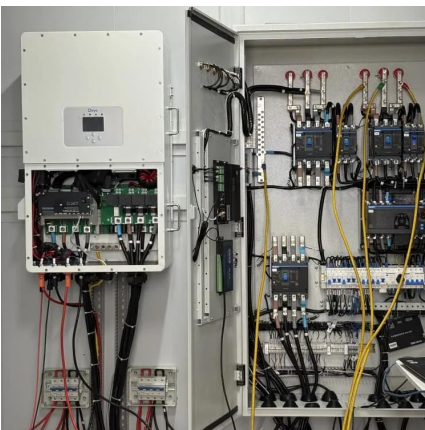
Communication Towers: Pillars of Modern Telecommunications

At the heart of this vast communication network, communication towers stand tall as indispensable structures, silently shouldering the crucial task of signal transmission and ...



Cell & Internet Tower Installation & Maintenance , Tridon

Contact us today to learn more about tower installation and maintenance for your communication system. Whether the project is a protective shelter design and ...



Blog -Communication Signal Tower Types & Design, Mobile Base Station

An Angular Steel Tower refers to a type of lattice tower used for various applications, including power transmission, telecommunication, and broadcasting. It is characterized by its angular or ...

[A Comprehensive Guide to ERRCS: Understanding the](#)

This signal can come from a variety of sources, including public safety radios or dedicated repeaters. Antennas - Antennas are used to transmit and receive signals between ...



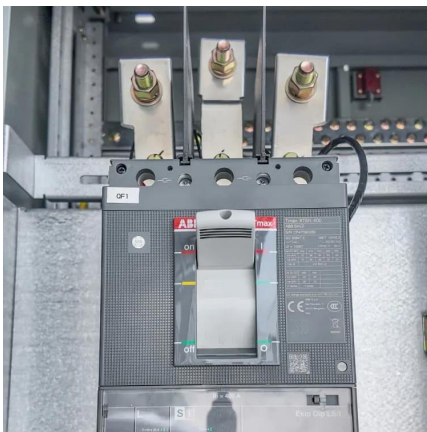


Base Station Installation & Maintenance

To ensure stable communication between a base station and connect with the stability of mobile devices, it is necessary to check radio communication performance and eliminate radio wave ...

Public Safety Primer

These frequencies are allocated by the Federal Communications Commission (FCC) for communication between fixed base stations and land mobile vehicle ...



BTS (base station transceiver)

BTS, or Base Station Transceiver, is a critical component in modern mobile communication networks. BTS is responsible for transmitting and ...

Understanding Telecommunication Towers

Telecommunication tower design, installation, maintenance, and optimization are influenced by factors such as signal coverage requirements, ...



Communication Tower Foundation Selection Criteria

Self-Supporting Towers A self-supporting tower is a free-standing tower with three or four legs connected by a latticework of braces. Self-supporting towers can either utilize a single ...



Mobile base station

The baseband unit (BBU) is a crucial component in mobile base stations, handling tasks like signal processing, resource allocation, and protocol management to ensure efficient ...



How it Works

Throughout the project we install BDA Systems Certified antennas, splitters and couplers to route signal to areas that need it most. All of our equipment is designed to work with the correct ...





Public Safety Primer

These frequencies are allocated by the Federal Communications Commission (FCC) for communication between fixed base stations and land mobile vehicle-mounted and portable ...



Emergency Responder Radio Coverage for New and Existing ...

The technical requirements for design, installation, commissioning, inspection, testing, and maintenance of in-building emergency radio communication enhancement ...

[Chapter 5 EMS Communications Flashcards , Quizlet](#)

Study with Quizlet and memorize flashcards containing terms like base station, biotelemetry, cellular telephones and more.



Communication Base Station Innovation Trends , Huijue Group ...

Ethical Considerations in Network Evolution As we deploy zero-energy base stations powered by ambient RF signals, shouldn't we address electromagnetic hypersensitivity concerns? The ...



Murphy Tower Service , A Leader in Communications Infrastructure

Enabling communications wherever you go. Licensed, full-service electrical team, who is also certified installers of EV charging stations. Whether it's Wi-Fi, passive optical networks, cellular ...



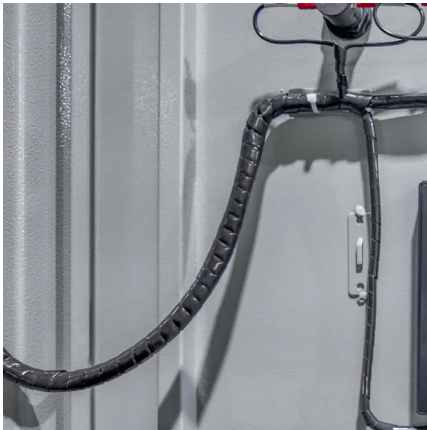
Murphy Tower Service , A Leader in Communications ...

Enabling communications wherever you go. Licensed, full-service electrical team, who is also certified installers of EV charging stations. Whether it's Wi-Fi, ...

EMERGENCY RESPONDER COMMUNICATION ...

any voluntary ERCES installation or any infrastructure installation as prescribed by VCC 918.1. The process will involve coordination from FFXC's DIT Emergency Communications Branch - ...





Telecommunication Towers: The Backbone of Modern ...

In the digital age, telecommunication towers are pivotal in enabling seamless connectivity. These towering structures serve as the backbone of ...

EMERGENCY RESPONDER COMMUNICATION ...

cy response personnel use portable radios to communicate while inside of buildings or structures. Fairfax County (FFXC) and our regional partners recognize that modern building design and ...



How a 5G cell tower works , Deutschland spricht über 5G

Base stations, or mobile communications base stations, are stationary radio or mobile communications installations essentially consisting of two elements: (1) one or more antennas ...

Process of Installing a Base Transceiver Station (BTS)

Installing a Base Transceiver Station (BTS) is a critical step in building mobile communication networks. Here's a step-by-step guide to the process:



Contact Us

For catalog requests, pricing, or partnerships, please visit:
<https://talbert.co.za>