

Can basic fertile land be used to build communication base station batteries





Overview

Why do cellular base stations have backup batteries?

Abstract: Cellular base stations (BSs) are equipped with backup batteries to obtain the uninterruptible power supply (UPS) and maintain the power supply reliability. While maintaining the reliability, the backup batteries of 5G BSs have some spare capacity over time due to the traffic-sensitive characteristic of 5G BS electricity load.

Do base stations use more energy than the cradle to the grave?

Base stations today consume more than 70% of the total energy used in mobile networks. As an industry, we need to look at the entire lifecycle in a way that is no longer linear (from the cradle to the grave), but circular (what happens beyond the 'grave') to find ways to minimize the environmental impact.

Can BS backup batteries be used as flexibility resources for power systems?

Therefore, the spare capacity is dispatchable and can be used as flexibility resources for power systems. This paper evaluates the dispatchable capacity of the BS backup batteries in distribution networks and illustrates how it can be utilized in power systems.

What makes a telecom battery pack compatible with a base station?

Compatibility and Installation Voltage Compatibility: 48V is the standard voltage for telecom base stations, so the battery pack's output voltage must align with base station equipment requirements. Modular Design: A modular structure simplifies installation, maintenance, and scalability.

What are the components of a base station?

Power Supply: The power source provides the electrical energy to base station elements. It often features auxiliary power supply mechanisms that guarantee operation in case of lost or interrupted electricity, during blackouts. Baseband



Processor: The baseband processor is responsible for the processing of the digital signals.

What is a base station in radio communications?

In radio communications, a base station is a wireless communications station installed at a fixed location and used to communicate as part of one of the following: a wireless telephone system such as cellular CDMA or GSM cell site. Base stations use RF power amplifiers (radio-frequency power amplifiers) to transmit and receive signals.



Can basic fertile land be used to build communication base station

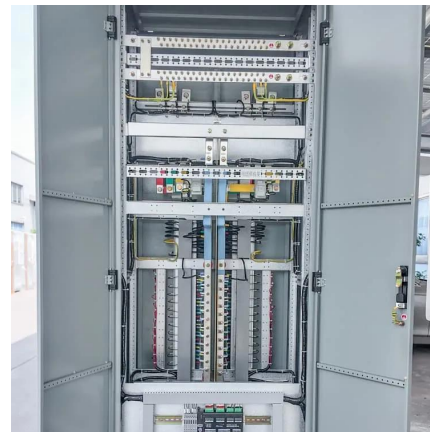


Base station

A fixed station is a base station used in a system intended only to communicate with other base stations. A fixed station can also be radio link used to operate a distant base station by remote ...

Communication Base Station Backup Battery

ECE 51.2V lithium base station battery is used together with the most reliable lifepo4 battery cabinet, with long span life (4000+) and stable performance. ...



Cradle to the Grave: Sustainability and the Life of a Base Station

Another crucial aspect of base station energy storage batteries is their role in stabilizing energy supply and demand. Telecommunications ...

Research and Implementation of 5G Base Station Location ...

The application requirements of 5G have reached a new height, and the location of base stations is



an important factor affecting the signal. Based on factors such as base station ...



5G base station architecture, Part 1: Evolution

Radio measurements: Test equipment connection to the Device Under Test (DUT) can be done with cables of transmission lines, but in millimeter wave, antennas are likely to be ...



Cradle to the Grave: Sustainability and the Life of a Base Station

Most base station sites are powered from the electricity grid, and replacing this with 100% solar energy is not always viable. However, adding a single solar panel to each site ...



Communication Base Station Energy Solutions

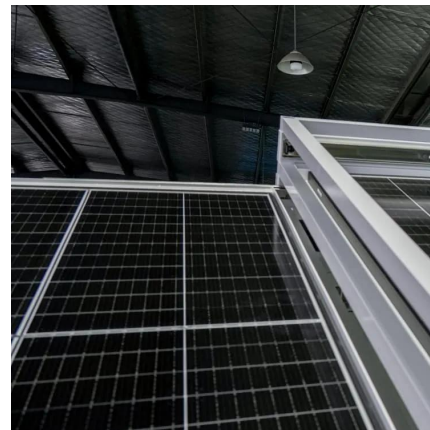
During the day, the solar system powers the base station while storing excess energy in the battery. At night, the energy storage system discharges to supply power to the base station, ...





Communication Base Station Energy Solutions

During the day, the solar system powers the base station while storing excess energy in the battery. At night, the energy storage system discharges to ...



Base Stations

The present-day tele-space is incomplete without the base stations as these constitute an important part of the modern-day scheme of wireless ...

Multi-objective cooperative optimization of communication base station

Recently, 5G communication base stations have steadily evolved into a key developing load in the distribution network. During the operation process, scientific dispatching ...



Evaluating the Dispatchable Capacity of Base Station Backup ...

Evaluating the Dispatchable Capacity of Base Station Backup Batteries in Distribution Networks
Published in: IEEE Transactions on Smart Grid (Volume: 12, Issue: 5, September 2021)



Telecom Base Station Backup Power Solution: Design ...

Among various battery technologies, Lithium Iron Phosphate (LiFePO4) batteries stand out as the ideal choice for telecom base station ...

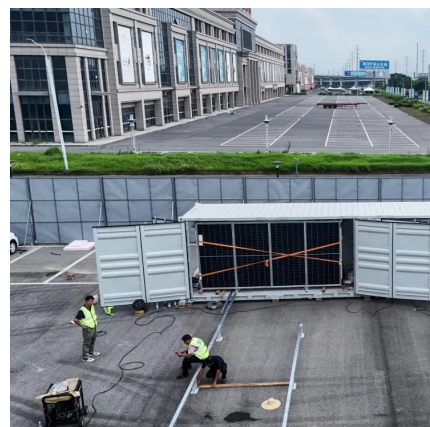


Cellular Networks, Base Stations, and 5G RAN

A user's mobile telephone communicates through the air with an base station antenna, which in turn links to the central exchange of the ...

Base station

A fixed station is a base station used in a system intended only to communicate with other base stations. A fixed station can also be radio link used to operate ...





What are base station energy storage batteries used for?

Another crucial aspect of base station energy storage batteries is their role in stabilizing energy supply and demand. Telecommunications networks require a consistently ...

What is a base station energy storage battery? , NenPower

Base station energy storage batteries offer vital support to enhance the stability of both telecommunications and electrical grids. During power outages or disruptions, these ...

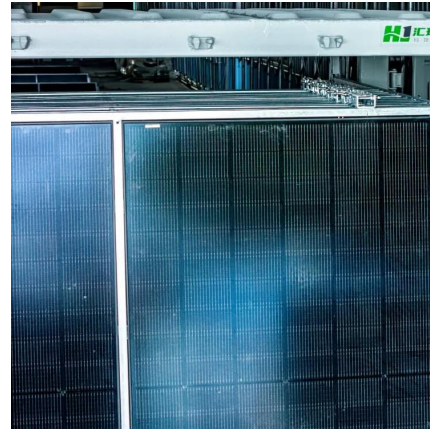


Research and Implementation of 5G Base Station Location ...

At the same time, the types of base stations and antennas are gradually rich, which makes the planning and selection of communication network sites become more complex. In order to ...

Radio Base Stations for Secure Communication

In the world of radio communications, a radio base station plays a vital role in ensuring reliable and seamless communication across a wide area. Whether used in mobile networks, ...



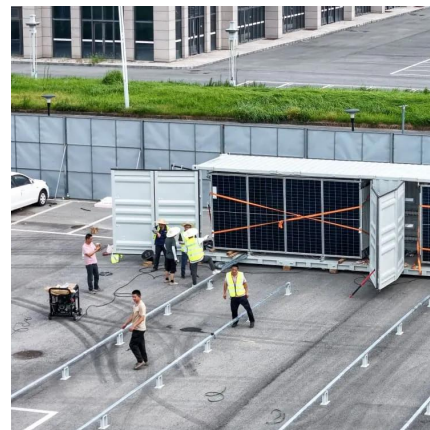
Reliability prediction and evaluation of communication base ...

Abstract One of the primary tasks for effective disaster relief after a catastrophic earthquake is robust communication. In this paper, we propose a simple logistic method based ...



Which Batteries Can Be Used as Backup Power Sources for ...

Several types of batteries can be used as backup power sources for communication base stations. The choice of battery depends on factors such as the power requirements of the base ...



What is a base station energy storage battery?

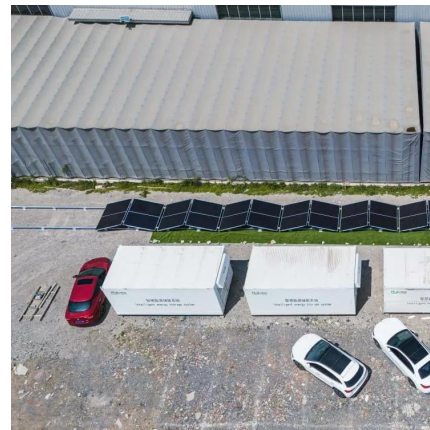
Base station energy storage batteries offer vital support to enhance the stability of both telecommunications and electrical grids. During power ...





Optimization of Communication Base Station Battery ...

In the communication power supply field, base station interruptions may occur due to sudden natural disasters or unstable power supplies. This ...



Telecom Base Station Backup Power Solution: Design Guide for ...

Among various battery technologies, Lithium Iron Phosphate (LiFePO4) batteries stand out as the ideal choice for telecom base station backup power due to their high safety, ...

base station in 5g

A 5G base station is a complex system that integrates advanced RF technology, digital signal processing, and network architecture to deliver ...



Unraveling the Mysteries of Cell Towers and Base Stations

On the other hand, the base station is a land station in the land mobile service. The term is used in wireless computer networking, mobile telephony, and wireless communications on the land. ...



Base Stations

The present-day tele-space is incomplete without the base stations as these constitute an important part of the modern-day scheme of wireless communications. They are ...

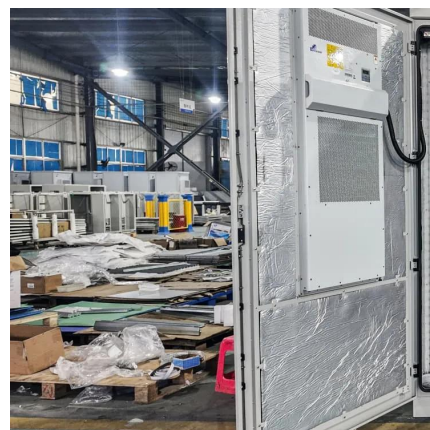


Energy-Efficient Base Stations , part of Green Communications

In order to effectively improve the energy efficiency of the future mobile networks, it is thus important to focus the attention on the Base Station.

Communication base station

Communication base stations are one of the core nodes of modern communication networks and require uninterrupted power supply to maintain ...





Evaluating the Dispatchable Capacity of Base Station Backup Batteries

Evaluating the Dispatchable Capacity of Base Station Backup Batteries in Distribution Networks
Published in: IEEE Transactions on Smart Grid (Volume: 12, Issue: 5, September 2021)

Base station

In the context of external land surveying, a base station is a GPS receiver at an accurately-known fixed location which is used to derive correction information ...

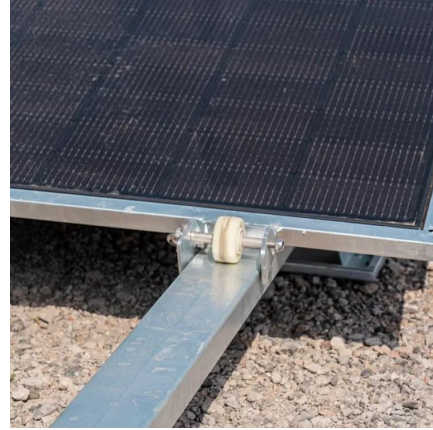


Usage of telecommunication base station batteries in demand ...

Electrical power systems are undergoing a major change globally. Ever increasing penetration of volatile renewable energy is making the balancing of electricity generation and consumption ...

Which Batteries Can Be Used as Backup Power Sources for Communication

Several types of batteries can be used as backup power sources for communication base stations. The choice of battery depends on factors such as the power requirements of the base ...



Contact Us

For catalog requests, pricing, or partnerships, please visit:
<https://talbert.co.za>