

Can an inverter with its own lithium battery be used





Overview

While standard inverters can work with lithium batteries, using a dedicated inverter designed for lithium technology is recommended. This ensures compatibility with the battery's charging and discharging characteristics, enhancing efficiency and prolonging battery life. 1.Are inverters compatible with lithium batteries?

Understanding the basics of inverters and different battery options sets the stage for exploring the compatibility between inverters and lithium batteries. Lithium batteries have revolutionized the world of inverters, offering a range of advantages that make them an ideal choice for powering these devices.

Which battery should I use for my inverter?

When it comes to powering your inverter, there are a few alternative options to consider aside from lithium batteries. While lithium batteries have gained popularity due to their numerous advantages, they may not be the right choice for everyone. One alternative option is lead-acid batteries.

What is a lithium battery for inverter?

Lithium offers unmatched performance, a longer lifespan, and better efficiency than traditional batteries. Whether you're setting up a home backup system, solar power solution, or mobile energy unit, this guide will walk you through everything you need to know about lithium batteries for inverters. Part 1.

Can a solar inverter be used with a lithium battery?

Integrating a solar inverter with a lithium battery can take your renewable energy setup to the next level. This combination allows for better energy storage, improved efficiency, and greater resilience during power outages. LiFePO4 batteries are particularly well-suited for solar applications because their thermal stability and long cycle life.

How do I install a lithium battery for inverter?



Understanding your inverter type is crucial to avoid potential issues down the line. The first step in installing a lithium battery for inverter with an existing inverter is to assess your current setup. This includes evaluating the condition of your inverter and ensuring it meets the necessary specifications for lithium-ion batteries.

Can a lithium battery be used with a sine wave inverter?

Some examples include pure sine wave and modified sine wave inverters. These inverters may work better with lithium-ion batteries. Understanding your inverter type is crucial to avoid potential issues down the line. The first step in installing a lithium battery for inverter with an existing inverter is to assess your current setup.



Can an inverter with its own lithium battery be used



[Comprehensive Guide to Inverter Battery](#)

Why Lithium battery is best for inverter? For many applications, especially in residential and commercial settings where efficiency, longevity, and low maintenance are ...

What does a power inverter do, and what can I use one for?

The inverter draws its power from a 12 Volt battery (preferably deep-cycle), or several batteries wired in parallel. The battery will need to be recharged as the power is drawn out of it by the ...



Understanding Battery Capacity and Inverter Compatibility

How Long Can a 100 Ah Battery Run a 1000W Inverter? To estimate how long a battery can run an inverter, we need to consider the power draw and the battery's capacity. ...

Can Lithium Batteries Work With Any Type of Inverter?

When setting up solar energy systems or home energy storage, a common question arises: Are



lithium batteries compatible with all inverters?
The short answer is no - proper ...



What is a Battery Inverter? A Comprehensive Overview

Part 1. What is the battery inverter? At its heart, a battery inverter is an electronic device that transforms direct current (DC) electricity, typically ...

Compatibility of Lithium-Ion Batteries with Existing Inverters

Can I use a lithium-ion battery with any inverter? While many inverters can be adapted to work with lithium-ion batteries, it's essential to check the specifications and compatibility of your ...



[Understanding the inverter for battery charger](#)

This article will be centered around inverter for battery charger to analyze as well as compare, understanding the nuanced differences between ...



Can Lithium Batteries Work With Any Type of Inverter?

When setting up solar energy systems or home energy storage, a common question arises: Are lithium batteries compatible with all inverters? ...



Compatibility of Lithium-Ion Batteries with Existing ...

Can I use a lithium-ion battery with any inverter? While many ...

Can I Attach My Small Inverter Directly to the Battery?

Yes, you can attach a small inverter directly to a battery, but doing it safely requires understanding voltage compatibility, wire sizing, and overload risks. Many DIYers assume it's ...



[Can we use a lithium battery for an inverter?](#)

Can we use a lithium battery for an inverter? :- Yes, you can use a lithium battery for an inverter, and in many ways, it's a better choice than ...



Lithium Battery for Inverter: Pros, Specs, and Tips

Can I replace my lead-acid battery with lithium in my inverter system? Yes, but you must ensure your inverter and charger are compatible with lithium charging profiles.

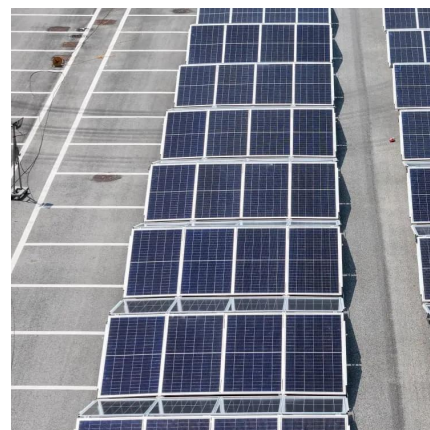


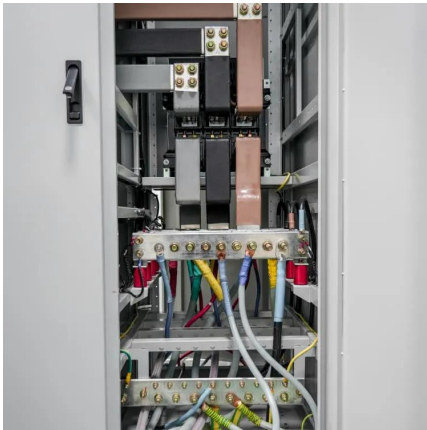
[Can I Use an Inverter to Power My House?](#)

An inverter alone cannot generate electricity; it must be used alongside batteries or a solar power system. For reliable off-grid or backup solutions, lithium batteries are highly recommended due ...

[Can You Mix Different Capacity Lithium Batteries?](#)

You can add individual battery switches after the fuses. From the main busbar, it can go to your inverter, charge controller, or generator. The ...



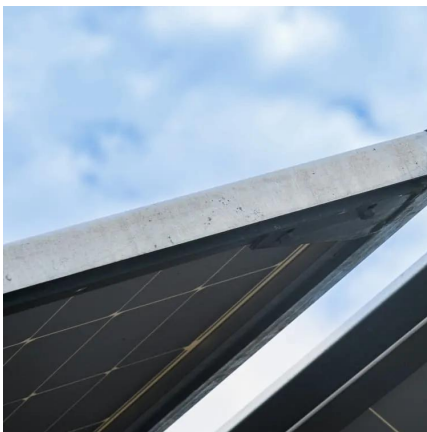


Importance of Compatibility Between Inverter and ...

Inverters that are not designed to work with lithium batteries may overcharge or undercharge the battery, leading to premature degradation. ...

Lithium Battery for Inverter: Pros, Specs, and Tips

Can I replace my lead-acid battery with lithium in my inverter system? Yes, but you must ensure your inverter and charger are compatible ...



"Why You Should Choose an Inverter with a Built-in Lithium Battery"

The inbuilt Lithium battery Inverters are good-looking products that can be kept anywhere in the house or office and can power even large equipment like Air-conditioners, ...

Can You Charge a Battery While Using an Inverter? - ...

Conclusion In conclusion, the combination of solar batteries and inverters provides a powerful solution for harnessing and storing solar energy.

...



Does an Inverter Charge a Battery?

To sum up, the inverter itself does not have the function of charging the battery. Its main task is to convert the form of electrical energy, ...

Best Battery Options to Use with an Inverter

Lastly, consider the type of battery you want to use. There are several options available, including lead-acid batteries, lithium-ion batteries, and even saltwater batteries. ...



Can we use a lithium battery for an inverter?

Can we use a lithium battery for an inverter? :- Yes, you can use a lithium battery for an inverter, and in many ways, it's a better choice than traditional lead-acid batteries. ...



Can all inverters use lithium batteries?

Understanding Inverters and Batteries
Understanding Inverters and Batteries In order to grasp the compatibility between inverters and lithium batteries, it's important to have a ...



Do You Need a Special Inverter for Lithium Batteries?

Effective setups often include inverters specifically designed or certified for use with lithium battery technology, as evidenced by multiple case studies and user reports.

How Inverters Work with Batteries: A Beginner's ...

Inverters play a vital role in renewable energy systems, battery backup systems, and off-grid applications. They ensure that batteries can ...



Importance of Compatibility Between Inverter and Lithium Battery

Inverters that are not designed to work with lithium batteries may overcharge or undercharge the battery, leading to premature degradation. Ensuring compatibility means that ...



Can all inverters use lithium batteries?

Not all inverters are designed to work with lithium batteries, so it's essential to ensure that your chosen inverter can support this type of battery. The first thing you need to ...

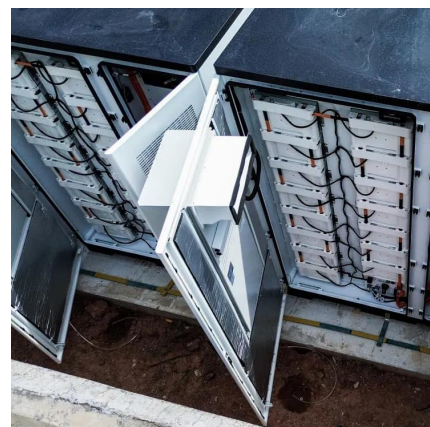


How Inverters Work with Batteries: A Beginner's Complete Guide ...

Inverters play a vital role in renewable energy systems, battery backup systems, and off-grid applications. They ensure that batteries can efficiently power loads that require an ...

Battery Choices for Home Power Inverters: What Professionals ...

Explore the different types of batteries (lead-acid, lithium-ion, etc.) used with home power inverters. Discuss the pros and cons of each type, their compatibility with various ...



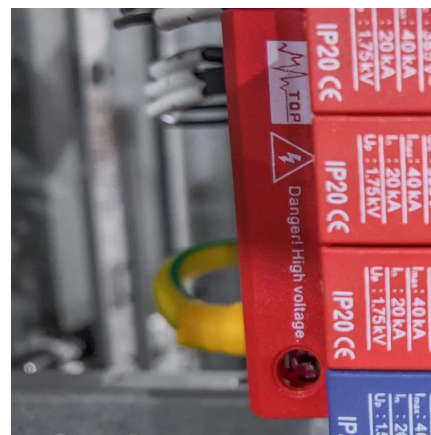


Do Lithium Batteries Need a Special Inverter?

While standard inverters can work with lithium batteries, using a dedicated inverter designed for lithium technology is recommended. This ensures compatibility with the battery's charging and ...

Can I Connect Inverter to Lithium Battery?

Yes, you can connect an inverter to a lithium battery. Lithium batteries, particularly Lithium Iron Phosphate (LiFePO4) batteries, are well-suited for use with inverters due to their ...



Do You Need a Special Inverter for Lithium Batteries?

Effective setups often include inverters specifically designed or certified for use with lithium battery technology, as evidenced by multiple case ...

Contact Us

For catalog requests, pricing, or partnerships, please visit:
<https://talbert.co.za>