

Can a 36V 12V inverter be used





Overview

Can I use a 12V inverter with a 36V power system?

No, the inverter must match the system voltage. Use a 36V inverter. How long will my system run?

Depends on total Ah. What is a good 36 volt inverter?

WZELB makes a 2,000 and 5,000W, 36-volt inverter. It comes with cables, a replacement fuse, and numerous safety features, such as overload, overvoltage, short circuit shutdowns, etc. This inverter is flexible and easy to use, with 2xAC outlets, a digital display, and a terminal block for hard wiring. WZELB makes a very good 36-volt inverter.

Do I need a 24 volt inverter?

Of course, you will need a 24 volt inverter (rather than a 12 volt inverter). Actually, you will barely be able to adequately charge one battery with a 300 watt panel. If you want to increase your battery bank, you will need more panels and a MPPT controller that can handle 50 amps.

Can a 36 volt panel charge a 12 volt battery?

Yes, a 36-volt solar panel can charge a 12-volt battery, but it's not an optimal setup. For instance, if you have a 36-volt panel that is 5 amps ($36v \times 5a = 180\text{watt}$), connecting it directly to a 12-volt battery while charging will result in the battery holding a voltage of 12 volts.

What type of inverter do I Need?

Also, keep in mind. A 24-volt, 36-volt, or 48-volt inverter is a good choice for equipment using over 3,000 watts. You can use regular or flexible connectors to connect the inverter to the battery bank, but remember that the thinner the wire, the higher the resistance.

How do you connect an inverter to a battery bank?



You can use regular or flexible connectors to connect the inverter to the battery bank, but remember that the thinner the wire, the higher the resistance. If your DC voltage is lower, you will pass more current through the cables, and in addition to getting hot, you will lose battery power. Summary:.

How much voltage does a 12-volt battery provide?

A 12-volt battery provides around 11.5 to 15.5 volts in normal operation. Contrary to popular belief, a solar panel is not a 'solar battery'. It is a current source, not a voltage source.



Can a 36V 12V inverter be used



12v to 36v 30a converter? , Endless Sphere DIY EV ...

Let say, for arguments sake, that I happened upon a 12v 600AH Lifepo4 battery, that fully works and a 4000w inverter (both for free) and I want ...

[The Best 36 Volt Power Inverters , SolarKnowHow](#)

So it doesn't really matter what voltage your battery is at the start, because you're converting it to get to 36V DC via an inverter and a charger. The faster your golf cart charger is, the more ...



The Differences Between 24v and 48v Inverter: Which ...

The correct inverter voltage is essential for system efficiency, safety, and future scalability. In standard off-grid solar systems, RVs, or mobile ...

Considerations when buying and installing an inverter

Basically, an inverter converts 12v DC to 110v or 230v AC. There are inverters that use other input



voltages (24v, 36v) but in this article, we ...



matching a 300w 36v solar panel to my 12v battery and 12/24v ...

Not always as not all controllers can handle that high of a voltage on a 12 volt battery. With a Grid Tied which you have, you should be using a MPPT Controller.



Wiring Six 12V Batteries to Build a 36V Power System

It's commonly used in golf carts, electric bikes, solar power banks, and even some RV systems. This configuration provides: Greater energy ...



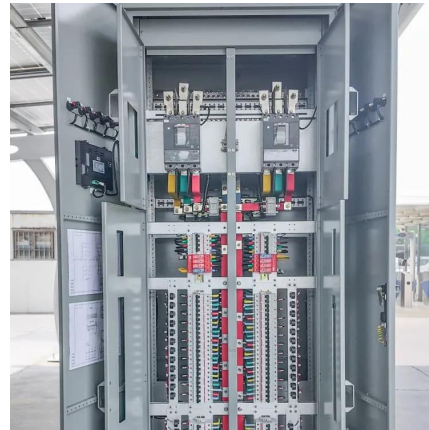
Tips to Choose the Right Inverter for Homes: 12V or 24V

Choose the Right Inverter with the difference between 12V or 24V and their advantages: inverter efficiency, battery bank setup, cabling cost, and ...



Inverter advice sought. 12 and 36 volt pure sine wave models.

But with the absence of selection at 36V you can use it to deliver 500W or 1000W or whatever. Add some solar and you could potentially extend for days depending on loads



Can I use a power inverter in the car when I'm driving?

Yes, you can certainly use a power inverter in the car while driving to power your devices. Regardless of the watt rating of your inverter, your car can only ...

[36 Volt Golf Cart battery to 12 Volt hook-up](#)

Got a PM about how I hooked 3 12 volt sources together on a 36 volt Golf Cart battery set-up, so I drew a picture in case someone else was interested. I use these Heavy ...



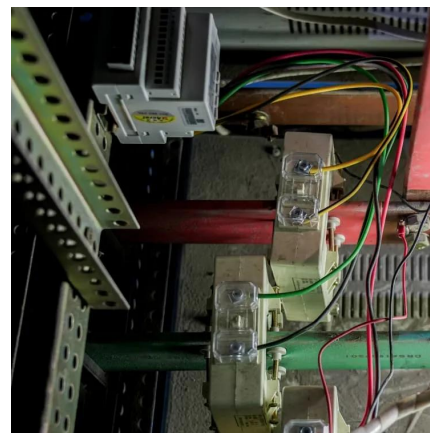
[The Best 36 Volt Power Inverters.](#) [SolarKnowHow](#)

The 3000W Pure Sine Wave Inverter (3000W36V) converts 36V DC power to efficient 110V/120V AC electricity. It is a good choice for cars, solar, and off-grid setups.



Considerations when buying and installing an inverter

Basically, an inverter converts 12v DC to 110v or 230v AC. There are inverters that use other input voltages (24v, 36v) but in this article, we discuss only 12v.



Wiring Six 12V Batteries to Build a 36V Power System

It's commonly used in golf carts, electric bikes, solar power banks, and even some RV systems. This configuration provides: Greater energy efficiency. Reduced current ...



[Best way to charge 12v battery. 36v 12v MPPT](#)

Charging with too high voltage is really hard on the battery, and would likely damage a controller not intended for it. You need an mppt type controller with those panels. A 12v nominal panel ...





Can I charge my 36v golf cart on a 12v battery system?

So it doesn't really matter what voltage your battery is at the start, because you're converting it to get to 36V DC via an inverter and a charger. The faster your golf cart charger ...

[1000W Pure Sine Wave Inverter-36V DC to 110V ...](#)

Please control your battery input voltage within the inverter input voltage range, for example, you buy a 12v inverter, the input voltage should be ...



1000W Pure Sine Wave Inverter-36V DC to 110V 120V AC Power ...

Please control your battery input voltage within the inverter input voltage range, for example, you buy a 12v inverter, the input voltage should be between 10v-15v, otherwise the ...



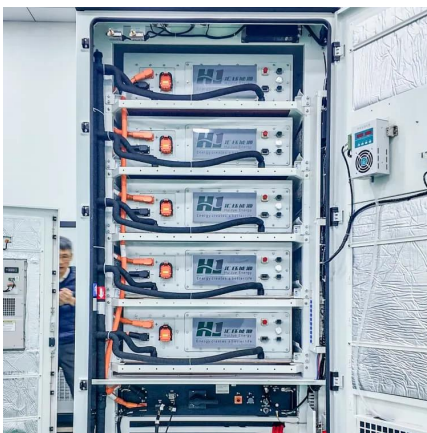
Can I use my 36v motor with a 48v battery and controller?

Hi all. Im new at this (as my question might show) I have a e-scooter with a 36v system and I want to connect a 48v battery and controller to the 36v motor (the motor is ...



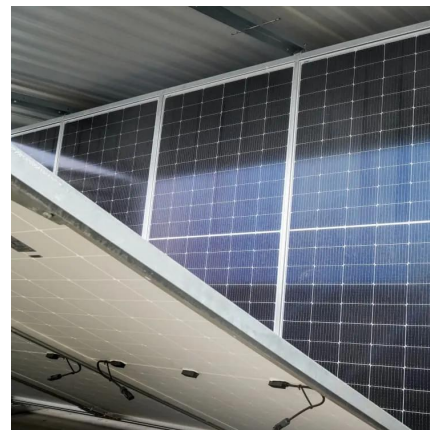
12V vs 24V vs 48V Inverter: How to Choose the Right System for ...

Confused about choosing between 12V, 24V, or 48V inverter systems? Discover which voltage is best for RV, solar, and off-grid setups. Learn the pros, cons, efficiency, cable ...



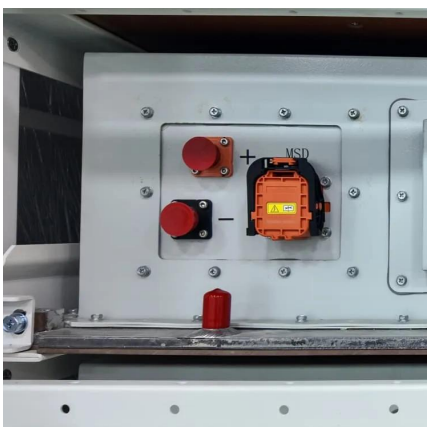
matching a 300w 36v solar panel to my 12v battery and 12/24v inverter

Not always as not all controllers can handle that high of a voltage on a 12 volt battery. With a Grid Tied which you have, you should be using a MPPT Controller.



[WZRELB 6000W 36V Pure Sine Inverter Review](#)

The WZRELB 6000W inverter changes 36-volt battery power (DC) into regular household electricity (AC) at 120V or 240V. It makes clean, stable power, like what you get ...





[1000W Pure Sine Wave Inverter-36V DC to 110V ...](#)

Product description Choose the appropriate inverter according to your battery, 12V/24V/36V/48V battery can choose 12V/24V/36V/48V inverter, ...



Amazon : 36v Inverter

Amazon : 36v inverterBELTTT 2000W Pure Sine Wave Inverter, Car Power Inverter 12V to 120V AC Converter for RV, Truck, Solar, Outdoor with Dual AC and 20A Socket, 5V 2.1A USB, ...

12v Solar without a Battery

If you have a small 12v appliance that you wish to power/charge when the sun is out, you can use a 24v36v to 12v step down converter. This will modulate the ...



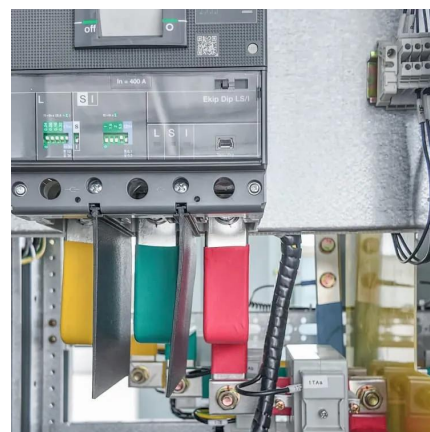
[36V panel, 12v inverter what controller options??](#)

I have 4- 270 watt 36V Panels, a 12v 2500watt inverter, 100 of 12v18ah battery's and my goal is to learn and test solar options while running a pool pump for 8 hours a day.



12V vs 24V Inverter: What's The Difference & Which is Better

Torn between 12V and 24V inverters? Discover the key differences in efficiency, cost, and power capacity to determine which is better for your energy needs.



36v INVERTER ON A 12v SYSTEM ? , DIY Solar Power Forum

A used battery distributor had a huge inventory of 36v lithium ion packs that they wanted me to make a video on, and I denied it because I couldn't find a good inverter.

Battery To Inverter Wire Size Calculator: What Size

The battery to inverter wire size calculator below will provide the size of the Copper wire that you need in AWG (American Wire Gauge) and mm² (square





12V vs 24V inverter

This article introduces how inverter works and compares 12V vs 24V inverter, including the applications, costs, and other differences, also ...

Do I Need a Special Inverter for a Lithium Battery?

Conclusion In conclusion, using a special inverter designed for lithium batteries is essential for ensuring optimal performance, safety, and efficiency. By selecting an appropriate ...



Contact Us

For catalog requests, pricing, or partnerships, please visit:
<https://talbert.co.za>