

Can a 12v inverter be powered by a 14v lithium battery





Overview

Yes, you can connect an inverter to a lithium battery. Lithium batteries, particularly Lithium Iron Phosphate (LiFePO4) batteries, are well-suited for use with inverters due to their high efficiency, lightweight design, and ability to deliver consistent power. What voltage should a 12V inverter run on?

The input voltage of the inverter should match the battery voltage. (For example 12v battery for 12v inverter, 24v battery for 24v inverter and 48v battery for 48v inverter) Summary What Will An Inverter Run & For How Long?

.

Are inverters compatible with lithium batteries?

Understanding the basics of inverters and different battery options sets the stage for exploring the compatibility between inverters and lithium batteries. Lithium batteries have revolutionized the world of inverters, offering a range of advantages that make them an ideal choice for powering these devices.

Which battery should I use for my inverter?

When it comes to powering your inverter, there are a few alternative options to consider aside from lithium batteries. While lithium batteries have gained popularity due to their numerous advantages, they may not be the right choice for everyone. One alternative option is lead-acid batteries.

Can a solar inverter be used with a lithium battery?

Integrating a solar inverter with a lithium battery can take your renewable energy setup to the next level. This combination allows for better energy storage, improved efficiency, and greater resilience during power outages. LiFePO4 batteries are particularly well-suited for solar applications because of their thermal stability and long cycle life.

Can a 12V battery be used with a 14v battery?



A device designed for a 12V system may not function correctly or safely with a 14V battery, as the higher voltage can lead to overheating or damage to sensitive electronics. Conversely, using a lower voltage than required can result in insufficient power delivery. See also [Do Batteries Die Even When Not in Use?](#)

.

What is a lithium ion battery for a home inverter?

Lithium-ion batteries offer a more consistent discharge rate, ensuring that your inverter operates smoothly and efficiently. A lithium-ion battery for a home inverter can significantly enhance your home's energy storage capabilities.



Can a 12v inverter be powered by a 14v lithium battery

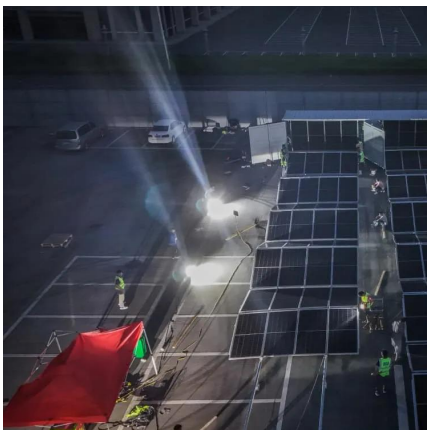


[How to Calculate How Long an Inverter Will Last](#)

How long an inverter lasts depends on the battery and load. This simple guide explains how to calculate inverter runtime of any size.

[Lithium battery with an unsupported Inverter](#)

Basically, if you can control charging settings (voltages) you can connect a Lifepo4 battery to just about any inverter. The voltage range of Lifepo4 is alot closer to GEL/AGM ...



[Constant 14.4V not OK for charging LiFePo4](#)

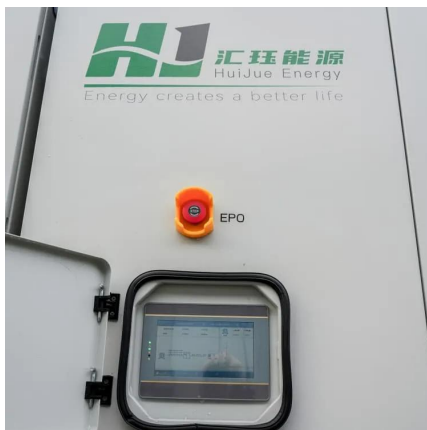
This is for shore power charging two Li Time 12V 100AH batteries wired in parallel in my RV. I'm trying to determine if I should upgrade my WFCO 9855 charger to a lithium ...

What does a power inverter do, and what can I use one for?

The inverter draws its power from a 12 Volt battery (preferably deep-cycle), or several



batteries wired in parallel. The battery will need to be recharged as the power is drawn out of it by the ...

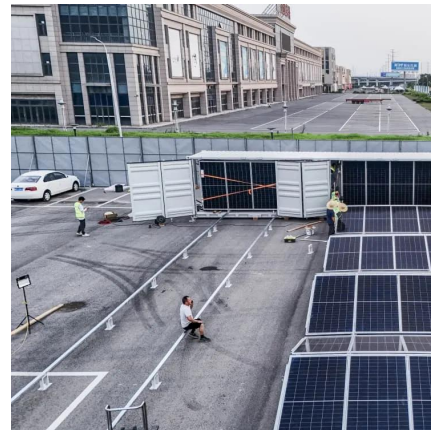


Understanding Voltage Compatibility: 12V vs 14V ...

Using 12V in a 14V-required system may underpower it, while using 14V in a 12V system risks overvoltage stress. Proper voltage ensures ...

Can a 12v inverter be powered by a 14v lithium battery

In general, 12v inverters will be ok with automotive voltages which can go up past 14.4volts. But you should always check the inverter (or any equipment) for their input voltage ...



[Complete Guide to Inverter Batteries - NPP POWER](#)

Inverter batteries is a rechargeable battery built to supply backup power for inverters, which convert direct current (DC) into alternating current (AC). These batteries store ...



Can Lithium Batteries Work With Any Type of Inverter?

When setting up solar energy systems or home energy storage, a common question arises: Are lithium batteries compatible with all inverters? The short answer is no - proper ...



How Long Will a Battery Last With an Inverter?

One of the most common concerns that irritate solar power system owners is the battery running duration. This is very important since it tells you ...

What size fuse between battery and inverter?

Do I need a fuse between battery and inverter? The short answer is yes, you do need a fuse (or a circuit breaker) between your battery bank ...



Compatibility of Lithium-Ion Batteries with Existing Inverters

In summary, installing a lithium-ion battery with an existing inverter is not only feasible but also highly beneficial. From improved efficiency and performance to enhanced energy storage and ...



How to charge the Ryobi 18v and 40v batteries directly from solar

Second, from what I understand if I have a 12v battery bank, and I want to charge it from solar, the solar array needs to produce a little more than 12v say 13-14v.



5 Best 12 Volt Lithium RV Batteries Reviewed + How To Charge

RV lithium batteries are becoming a popular choice among campers because of their lightweight and long life. Here are some of the best 12 volt options reviewed.

Amazon : Lithium Inverter

Power Inverter Pure Sine Wave 1200 Watt 12V Dc to 120V Lithium Battery Compatible with UL Fuses and USB-C PD30W and QC 3.0 FastCharger and Wired Remote for RVs Car Solar ...





[How Long To Charge 12v 100ah Battery](#)

A 100Ah battery can last anywhere from 120 hours (running a 10W appliance) to 36 minutes (running a 2,000W appliance). 100Ah 12V battery has a capacity of 1.2 kWh; that's more than ...

Buy SUN LION 1000 , Solar Inverter with Lithium Battery

SUN LION 1000 features a built-in lithium battery & wall mount design. Easy to install, efficient, and perfect for off-grid or backup power.



[Can all inverters use lithium batteries?](#)

Not all inverters are designed to work with lithium batteries, so it's essential to ensure that your chosen inverter can support this type of battery. The first thing you need to ...

NMC

Our 14V lithium-ion battery series offers an expansion upon our 12V battery range to better fit applications that require more power ranging from e-bikes and e-scooters to golf carts, ...



Understanding Voltage Compatibility: 12V vs 14V Batteries

Using 12V in a 14V-required system may underpower it, while using 14V in a 12V system risks overvoltage stress. Proper voltage ensures safe operation, reliable performance, ...



Calculate Battery Size For Any Size Inverter (Using ...

To recharge your battery from time to time you would need the right size solar panel to do the job! Read the below article to find out the suitable ...



18650 to AC power?

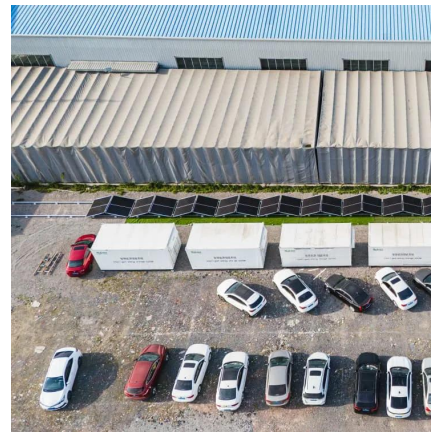
Worst case (if there are no good options for direct 3-4.5v to AC) you could look into pairing a 3-4.5v to 12v boost module with a common 12v AC ...





Calculate Battery Size For Any Size Inverter (Using Our Calculator)

To recharge your battery from time to time you would need the right size solar panel to do the job! Read the below article to find out the suitable solar panel size for your battery bank



How bad, if at all, is 14.4V overvoltage for 12V inverter?

In general, 12v inverters will be ok with automotive voltages which can go up past 14.4volts. But you should always check the inverter (or any equipment) for their input voltage ...

[Can I Connect Inverter to Lithium Battery?](#)

Yes, you can connect an inverter to a lithium battery. Lithium batteries, particularly Lithium Iron Phosphate (LiFePO4) batteries, are well-suited for use with inverters due to their ...



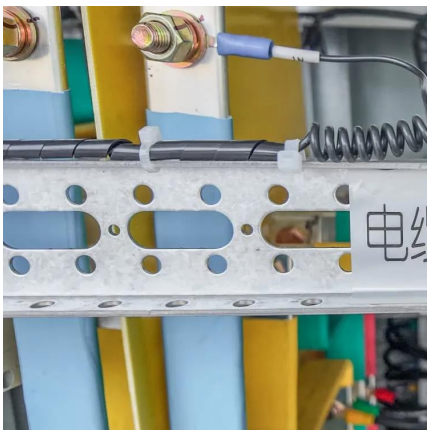
Can Lithium Batteries Work With Any Type of Inverter?

When setting up solar energy systems or home energy storage, a common question arises: Are lithium batteries compatible with all inverters? ...



Compatibility of Lithium-Ion Batteries with Existing ...

In summary, installing a lithium-ion battery with an existing inverter is not only feasible but also highly beneficial. From improved efficiency and performance ...



Can I get 14.4 volts from a 12v li-ion battery?

It'll run off my 12-volt lithium-ion portable battery, but the functionality is compromised. I can connect the CPAP's AC power cord to an inverter and power the inverter ...

Contact Us

For catalog requests, pricing, or partnerships, please visit:
<https://talbert.co.za>