

Can a 120v lithium battery be used with a 600w inverter





Overview

So I have made it easy for you, use the calculator below to calculate the battery size for 200 watt, 300 watt, 500 watt, 1000 watt, 2000 watt, 3000 watt, 5000-watt inverter .

Note! The battery size will be based on running your inverter at its full capacity
Assumptions 1. Modified sine wave inverter efficiency: 85% 2. Pure sine wave inverter efficiency: 90% 3. Lithium Battery: 100% Depth of discharge limit 4. lead-acid.

To calculate the battery capacity for your inverter use this formula $\text{Inverter capacity (W)} \times \text{Runtime (hrs)} / \text{solar system voltage} = \text{Battery Size} \times 1.15$ Multiply the result by 2 for lead-acid type.

You would need around 24v150Ah Lithium or 24v 300Ah Lead-acid Battery to run a 3000-watt inverter for 1 hour at its full capacity .

Here's a battery size chart for any size inverter with 1 hour of load runtime
Note! The input voltage of the inverter should match the battery voltage. (For example 12v battery for 12v.

The short answer is no - proper inverter matching is crucial for optimal performance and safety. Let's examine the key compatibility factors for lithium battery and LiFePO4 battery systems. Lithium batteries require specific inverter features: Voltage Matching Can a lithium battery run a large inverter?

Bottom line, if you want to run large inverter loads above 1000w on a lithium battery, make sure you choose a lithium battery that is designed for larger inverters or a system that can be paralleled safely with active balancing between the connected batteries.

Which battery should I use for my inverter?

When it comes to powering your inverter, there are a few alternative options to consider aside from lithium batteries. While lithium batteries have gained popularity due to their numerous advantages, they may not be the right choice for everyone. One alternative option is lead-acid batteries.



Are all inverters compatible with lithium-ion batteries?

These include the inverter's voltage, charging algorithm, and overall compatibility with lithium-ion technology. Not all inverters are created equal. Some may be specifically designed for traditional batteries, while others can seamlessly integrate with lithium-ion batteries. Check your inverter's specifications to ensure compatibility.

What is a lithium battery for inverter?

Lithium offers unmatched performance, a longer lifespan, and better efficiency than traditional batteries. Whether you're setting up a home backup system, solar power solution, or mobile energy unit, this guide will walk you through everything you need to know about lithium batteries for inverters. Part 1.

Can lithium batteries be used in inverter-powered systems?

Lithium batteries can be used in a wide range of inverter-powered systems: Home power backup: Provides energy during power outages and ensures critical appliances stay running. Solar energy storage: Ideal for storing daytime solar generation for nighttime use.

How do I choose a lithium battery for inverter use?

When selecting a lithium battery for inverter use, it is essential to understand the key specifications: Voltage (V): Most inverter systems use 12V, 24V, or 48V batteries. Higher voltage systems are more efficient for larger power loads. Capacity (Ah or Wh): Amp-hours or Watt-hours indicate how much energy the battery can store and deliver.



Can a 120v lithium battery be used with a 600w inverter



Lithium Batteries: What Size Inverter Can I Use?

Bottom line, if you want to run large inverter loads above 1000w on a lithium battery, make sure you choose a lithium battery that is designed for larger inverters or a system that can be ...

Compatibility of Lithium-Ion Batteries with Existing ...

Some may be specifically designed for traditional batteries, while others can seamlessly integrate with lithium-ion batteries. Check your ...



The Complete Off Grid Solar System Sizing Calculator

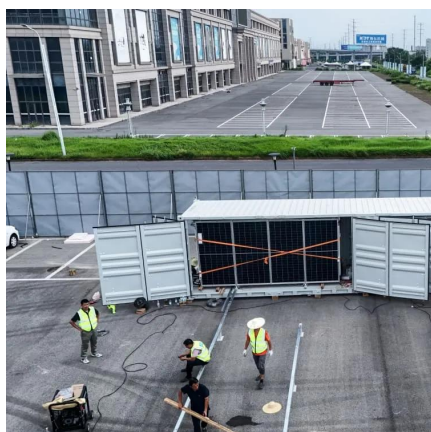
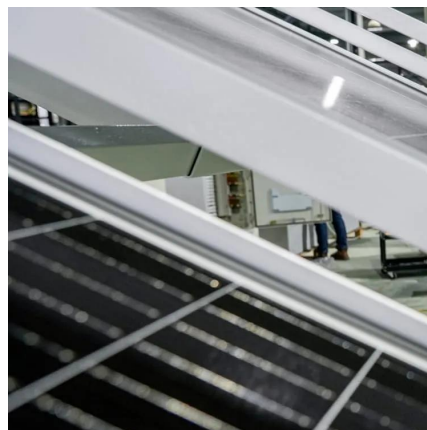
Below is a combination of multiple calculators that consider these variables and allow you to size the essential components for your off-grid solar ...

What Is the Maximum Inverter for 100Ah Battery?

Conclusion In conclusion, while a 100Ah lithium battery can run a 1000 watt inverter, it is



essential to understand this setup's limitations and ...



Can Lithium Batteries Work With Any Type of Inverter?

When setting up solar energy systems or home energy storage, a common question arises: Are lithium batteries compatible with all inverters? ...

Lithium battery with an unsupported Inverter

A lot depends on how much your inverter can be adjusted for the charge the batteries. For drop in replacement of gel batteries LFP (LiFePO4) would be easier and safer ...



Calculate Battery Size For Any Size Inverter (Using Our Calculator)

So I have made it easy for you, use the calculator below to calculate the battery size for 200 watt, 300 watt, 500 watt, 1000 watt, 2000 watt, 3000 watt, 5000-watt inverter



Compatibility of Lithium-Ion Batteries with Existing Inverters

Some may be specifically designed for traditional batteries, while others can seamlessly integrate with lithium-ion batteries. Check your inverter's specifications to ensure compatibility.



[Lithium Batteries: What Size Inverter Can I Use?](#)

Bottom line, if you want to run large inverter loads above 1000w on a lithium battery, make sure you choose an lithium battery that is designed for larger ...

Best Batteries for Solar Inverter Systems: Top Power Storage ...

Choosing the best battery for solar inverters is essential to ensure efficient, reliable, and long-lasting solar power systems. This guide reviews top battery-integrated solar kits and ...



Lithium Battery for Inverter: Pros, Specs, and Tips

Can I replace my lead-acid battery with lithium in my inverter system? Yes, but you must ensure your inverter and charger are compatible ...



Lithium Battery for Inverter: Pros, Specs, and Tips

Can I replace my lead-acid battery with lithium in my inverter system? Yes, but you must ensure your inverter and charger are compatible with lithium charging profiles.



Solar Generator 600W Portable Power Station with ...

Buy Solar Generator 600W Portable Power Station with 200W Foldable Solar Panel, 647Wh Lithium Battery, 120V/600W AC Outlet, Quiet ...

[12 Volt Battery Inverter: How Long it will Last](#)

However, you can determine how long will a 12 volt battery run an inverter depending on how many watts load and amp-hour the battery has. In ...





[ECO-WORTHY Solar Panel Kit with Battery and ...](#)

[Pure Sine Wave Inverter]: 600W Pure Sine Wave Off Grid Solar Inverter, transforming DC into AC, extending the use of this system, and user ...

[12 Volt Battery Run Time Calculator](#)

Do you have a 12v device you need to power but don't know what 12-volt battery you need? For those running a continuous 12-volt load, an adequately sized deep-cycle ...

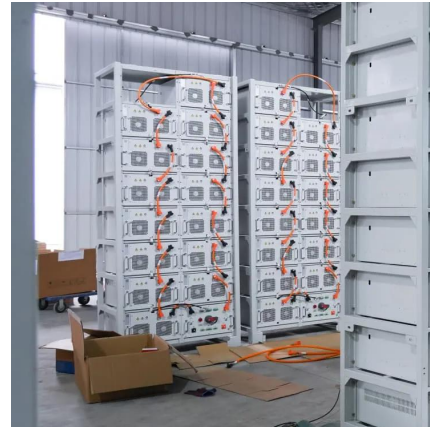


What size inverter do you need for a 100ah battery?

A 12V battery will require a 12V inverter, and a 24V battery will require a 24V inverter. Output Waveform: This will indicate how smooth of an AC waveform the inverter ...

[Can I Connect Inverter to Lithium Battery?](#)

Yes, you can connect an inverter to a lithium battery. Lithium batteries, particularly Lithium Iron Phosphate (LiFePO4) batteries, are well-suited for use with inverters due to their ...



Portable Power Station 600W, 647Wh Backup Lithium ...

Buy Portable Power Station 600W, 647Wh Backup Lithium Battery, 120V/600W AC Outlet, Solar Generator for Home, Outdoor, Camping ...



Best Solar Inverters With Battery for Reliable Off-Grid Power

1 day ago· The kit includes 200W solar panels, a 30A charge controller, a 50Ah lithium iron phosphate battery, and a 600W inverter ready for off-grid power solutions. The solar panels ...



What 3000W inverter to pick.

I will be getting a new rv in about 1 month. It comes with all the basic solar other than the inverter and lithium batteries. It is inverter prepped and lithium compatible. My ...





Portable Power Station, 266wh Portable Generator Camping Home Use

Buy Portable Power Station, 266wh Portable Generator Camping Home Use Lithium Battery, Power Station 300W Emergency Backup with 120V Pure Sine Wave AC ...



What Can a 600W Inverter Run? The Ultimate Guide to 600 Watt ...

Discover what a 600w inverter can run, from laptops to small appliances. Learn usage tips, battery needs, and best practices for off-grid or backup power.

[Can all inverters use lithium batteries?](#)

Not all inverters are designed to work with lithium batteries, so it's essential to ensure that your chosen inverter can support this type of battery. The first thing you need to ...



Understanding Battery Capacity and Inverter Compatibility

Inverter Efficiency: Lithium batteries generally work well with modern inverters, but checking the inverter's efficiency rating is advisable. Efficiency impacts the actual power ...



[Amazon : Anker 521 Portable Power Station...](#)

A New Era of Charging Technology LFP batteries enable hassle-free camping and longer adventures. "Charge up the onboard lithium iron phosphate battery ...



Can Lithium Batteries Work With Any Type of Inverter?

When setting up solar energy systems or home energy storage, a common question arises: Are lithium batteries compatible with all inverters? The short answer is no - proper ...

Contact Us

For catalog requests, pricing, or partnerships, please visit:
<https://talbert.co.za>