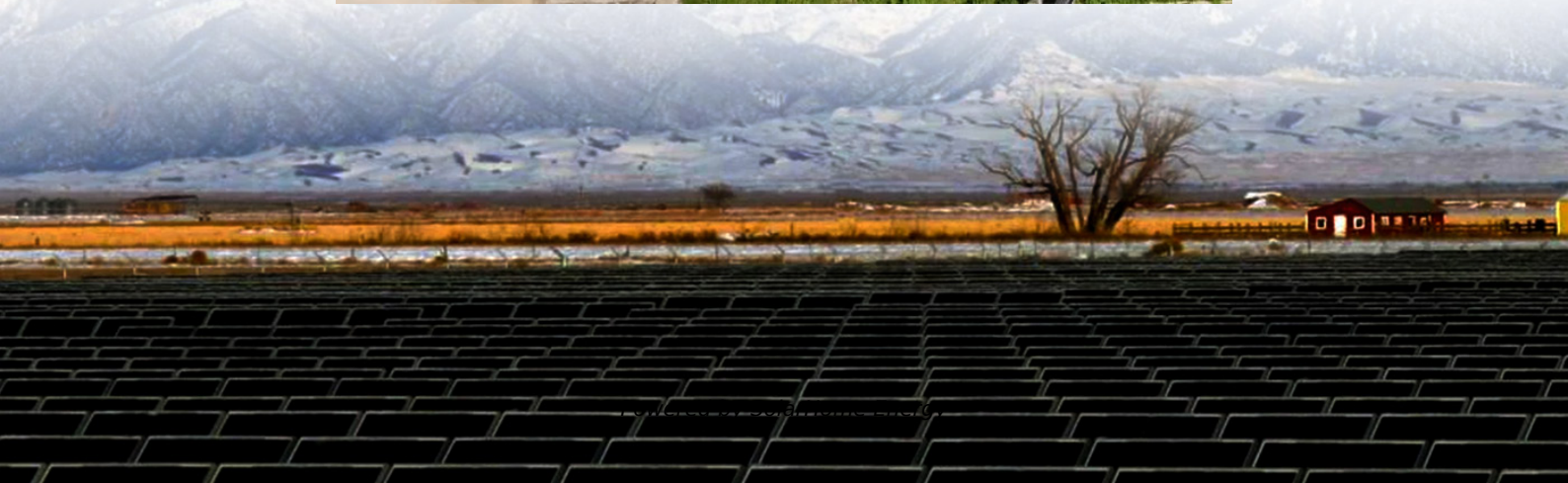


British telecommunications base station electricity fee standards





Overview

Does a radio base station need planning permission?

A radio base station not meeting the definition of “Telecommunications Radio Base Station” is considered as a type of “Public Utility Installation”. Whether it will require planning permission from the TPB will depend on the provisions of the concerned statutory plan.

What is the Ofcom metering and billing Approval scheme?

This system of approval arrangements represents the Ofcom Metering and Billing Approval Scheme. The Ofcom Metering and Billing Direction (PDF, 364.3 KB) sets out the requirements for gaining approval under the condition and is essentially a technical standard intended to ensure compliant systems will deliver accurate bills.

What is a telecommunications system (radio base station)?

A telecommunications system (radio base station) may comprise an equipment room/shelter which is a structure for housing power supply and transmission equipment and/or antennae which are fixed to roof parapet of a building or attached to supporting frames projecting from the external wall of a building. 2.

Does a public utility installation require planning permission from the TPB?

Whether it will require planning permission from the TPB will depend on the provisions of the concerned statutory plan. Permission from the TPB is not required if “Public Utility Installation” is under Column 1 of the Notes, i.e. a use always permitted in the relevant zone of the statutory plan.

Who pays to use Great Britain's electricity network?

All users of Great Britain’s electricity network pay to use it. Users include generators, who use the network to transport the electricity they generate to where it is needed, and demand users who use it to obtain electricity when



they need to use it. Download the Charging Futures network charges explainer.

What is a radio base station reconfiguration procedure?

This procedure outlines the application procedure to be followed by the mobile services operators (hereinafter called the “operators”) for the reconfiguration of existing radio base stations NOT involving changes in the structural design and planning perspective of the parent building, and the change of land use.



British telecommunications base station electricity fee standards



[The telecoms regulatory framework in the UK](#)

How the telecoms regulatory framework is affected by the UK leaving the EU.

Metering and billing

The Ofcom Metering and Billing Direction (PDF, 364.3 KB) sets out the requirements for gaining approval under the condition and is essentially a technical standard ...



[Predictive Modelling of Base Station Energy ...](#)

The increasing demand for wireless communication services has led to a significant growth in the number of base stations, resulting in a substantial increase in energy consumption. ...

Key Factors Affecting Power Consumption in Telecom ...

Discover the key factors influencing power consumption in telecom base stations. Optimize



energy efficiency and reduce operational costs with ...



The charges for using Great Britain's electricity system

All users of the electricity transmission system pay to use it. This brief overview looks at who pays, for what, and how the charges are calculated.

Code of practice for protective earthing of electrical installations

In Great Britain earthing of an electricity supply system is governed by the Electricity Safety, Quality and Continuity Regulations 2002 as amended (ESQCR) [1] and the Electricity at Work ...



Masts and planning

Obtaining planning permission for the physical structures that host the radio equipment is handled by the relevant local planning authorities. Depending on ...



Your Guide to Telecommunications Development Planning.

Planning policy guidance on telecommunications
The revised National Planning Policy Framework (NPPF), published on 19th February 2019, supports high-quality communications infrastructure ...



British Standards Institution

Sector: Governance & Resilience Categories:
Interface and interconnection equipment ,
Networking , Fire protection. Other ,
Identification cards and related devices , ...

Third party costs

Understand third party costs on business energy bills, including network and policy charges, and recent changes impacting costs in 2025.



The Base Station in Wireless Communications: The ...

Base station, also known as BTS (Base Transceiver Station), is a key device in wireless communication systems such as GSM. Equipped with ...



Telecoms industry guidance

Guidance and contact information on standards, specifications and other requirements for the telecoms industry.



Metering and billing

The Ofcom Metering and Billing Direction (PDF, 364.3 KB) sets out the requirements for gaining approval under the condition and is essentially a ...

Power Consumption Modeling of Base Station as per Traffic ...

Abstract Base Station is the main contributor of energy consumption in cellular mobile communication. The traffic of base station varies over time and space. Therefore, it is ...



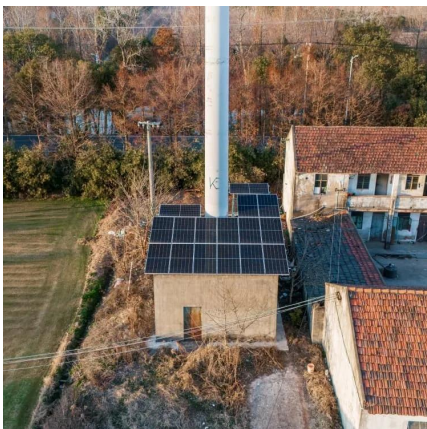


Get energy price cap standing charges and unit rates by region

Electricity and gas standing charges and unit rates by payment type for regions within England, Scotland and Wales.

[GUIDANCE NOTE FOR SUBMISSION OF APPLICATIONS BY](#)

A radio base station not meeting the definition of "Telecommunications Radio Base Station" is considered as a type of "Public Utility Installation". Whether it will require planning permission ...



9

Cellular wireless access networks have been identified as the main consumer of energy in the wireless industry, while statistics show that radio base stations (RBS) in such a network ...

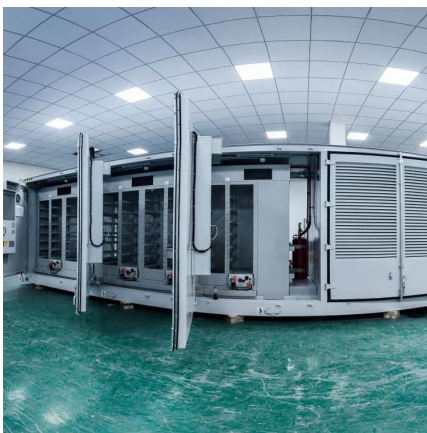
Masts and planning

Obtaining planning permission for the physical structures that host the radio equipment is handled by the relevant local planning authorities. Depending on location and size, not all base stations ...



Breaking Down Base Stations - A Guide to Cellular Sites

Wondering what telecom sites really look like? Find everything you need to know about telecom sites, towers, and their components.



Telecommunications Tower Base Station Energy Monitoring ...

Normally, the power system of base station could be divided into AC part and DC part [-48Vdc]. And usually request a multi-channel metering regarding the different energy usage like for ...



[Building broadband and mobile infrastructure](#)

This briefing paper explains the rules for building telecommunications infrastructure such as 5G mobile masts, including ...





What is a Base Station in Telecommunications?

What is a Base Station? A base station is a critical component in a telecommunications network. A fixed transceiver that acts as the central communication hub for one or more wireless mobile ...



Understanding Base Transceiver Stations: The Backbone of ...

How Base Transceiver Stations Work
Understanding how BTS functions demystifies mobile communication. This section outlines the processes involved in signal transmission and ...

Power Base Station

Base station power refers to the output power level of base stations, which is defined by specific maximum limits (24 dBm for Local Area base stations and 20 dBm for Home base stations) ...



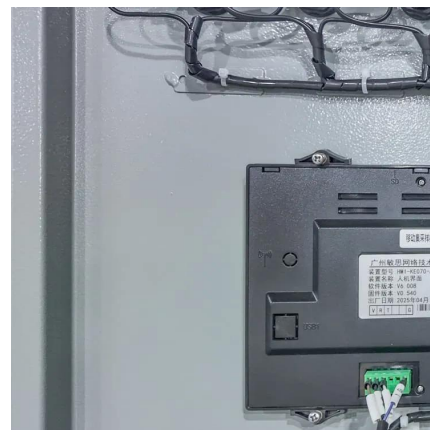
Key Factors Affecting Power Consumption in Telecom Base Stations

Discover the key factors influencing power consumption in telecom base stations. Optimize energy efficiency and reduce operational costs with our expert insights.



British Standards Institution

Overview and guidance for the IEC 61158 and IEC 61784 series. Categories: Industrial process measurement and control , Telecommunication systems. General , Data communication ...



Contact Us

For catalog requests, pricing, or partnerships, please visit:
<https://talbert.co.za>