

Between base station and communication room





Overview

What are base stations & cell towers?

Base stations and cell towers are critical components of cellular communication systems, serving as the infrastructure that supports seamless mobile connectivity. These structures facilitate the transmission and reception of signals between mobile devices and the wider network, enabling voice calls, text messages, and data services.

Why are base stations important for modern telecommunications?

In summary, base stations are critical for modern telecommunications as they serve as the link between mobile devices and the extensive network infrastructure that spans the globe. The strategic deployment and ongoing improvement of these stations are essential for maintaining global connectivity.

What is a signal transmission & reception base station?

Signal Transmission and Reception Base stations use antennas mounted on cell towers to send and receive radio signals to and from mobile devices within their coverage area. This communication enables users to make voice calls, send texts, and access data services, connecting them to the wider world.



Between base station and communication room



The Base Station in Wireless Communications: The ...

Equipped with an electromagnetic wave antenna, often placed on a tall mast, the base station enables communication between mobile terminals ...

What Is the Role of a Base Station in Wireless Communication?

Base stations are critical components in wireless communication networks, serving as the intermediary between mobile devices and the core network. They play a vital role in ...



[An introduction to 5G New Radio architecture](#)

The wireless access network is responsible for connecting the terminal to the communication network, corresponding to the terminal and ...

Base Stations

Backhaul Connection: The backhaul connection links the base station to the core network in the mobile communication system. It provides for



the interchange of data between ...



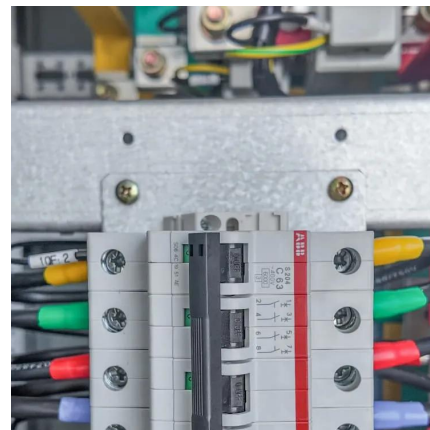
Base Stations and Cell Towers: The Pillars of Mobile ...

Base stations and cell towers are critical components of cellular communication systems, serving as the infrastructure that supports seamless ...



Lobby and Machine Room Communication Systems

The SmartRescue System is designed to provide seamless two-way, person-to-person voice communication for elevators, accommodating up to 10 Rath 2100 ...



What is a Mobile Switching Center and How Does a ...

Set between the base station and the Public Switched Telephone Network (PSTN), the Mobile Switching Center works as a gateway for all mobile ...





What is the difference between base station and repeater?

What is base radio system? In radio communications, a base station is a wireless communications station installed at a fixed location and used to communicate as part of one of ...



[Telecommunications Rooms and Why They Matter](#)

Properly designed telecommunications rooms ensure that technology services are available with as much uptime as possible. Here are 12 design elements that make your project's ...

[How do communication base stations work](#)

They allow mobile devices to connect with the network, enabling voice calls, text messages, and data transfers. In this article, we will explore how communication base stations work and their ...



[DO Base Stations Need to See Each Other? The](#)

Line of sight refers to the unobstructed path between two base stations, allowing for direct communication and transmission of signals. This direct path ensures a strong and ...



Telecommunications Rooms and Why They Matter

Properly designed telecommunications rooms ensure that technology services are available with as much uptime as possible. Here are 12 design elements ...



Ground Stations Explained: How Does Satellite Data ...

Each pass over a ground station is an opportunity to send data from and to the satellite. This satellite-to-ground link (SGL) describes the ...

Base Station Controller

In GSM (Global System for Mobile Communications) networks, the BSC sits between the BTS and the Mobile Switching Center (MSC), acting as a mediator and physical ...



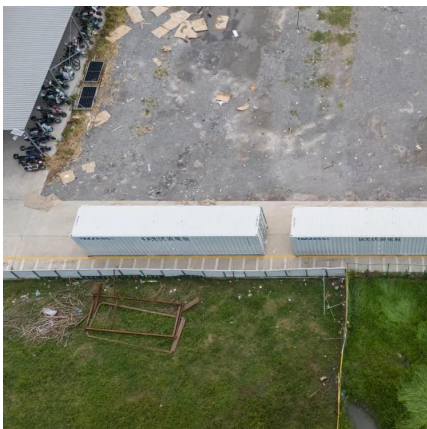


Cell sites and cell towers in a mobile cellular network

A picture of a cell tower at a cell site Cell site means the location where a cell tower is installed A cell site is a location or "site" where a mobile ...

Base Stations and Cell Towers: The Pillars of Mobile Connectivity

Base stations and cell towers are critical components of cellular communication systems, serving as the infrastructure that supports seamless mobile connectivity. These ...



What is a Base Station?

Most base stations do not need special towers, and can be built directly on the existing roof. Generally, you can see a row of plate-shaped ...

What Is A Base Station?

In summary, the base station is the active component responsible for network communication, while the tower is the physical structure that supports the base station.



The Base Station in Wireless Communications: The Key to ...

Equipped with an electromagnetic wave antenna, often placed on a tall mast, the base station enables communication between mobile terminals (such as mobile phones or ...



Understanding Base Station Controller Architecture: A ...

A base station controller (BSC) is a vital component in the mobile telecommunications network that acts as the central hub for communication between multiple ...



IoT Glossary: Mobile Switching Center (MSC) Explained

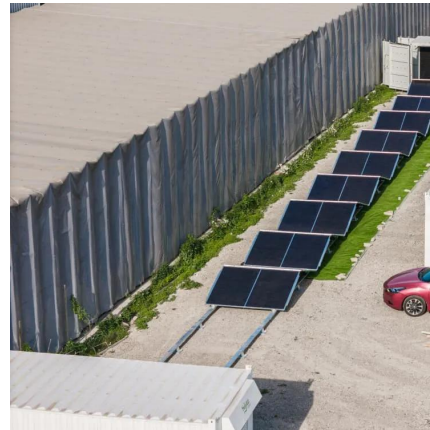
The MSC initiates call setup between subscribers and is also responsible for real time pre-paid billing and account monitoring. The MSC is responsible for inter- BSC handovers ...





PowerPoint Presentation

The Air Force Installation and Mission Support Center sustains the base communications infrastructure that supports Department of the Air Force mission requirements.



What is a Base Station?

Most base stations do not need special towers, and can be built directly on the existing roof. Generally, you can see a row of plate-shaped objects standing upright and ...

Station Communications Rooms Are Nerve Centers of ...

By Alan M. Petrillo The communications center in a firehouse is its link with 911 dispatching and serves the function of a central nervous system ...



X2 X2 interface

The X2 interface is an important interface used in Long-Term Evolution (LTE) and 5G networks to enable communication and coordination between neighboring base stations, ...



What is the difference between Base Station and ...

The performance of base stations directly affects the service quality of mobile communication networks, including call quality, data transmission rate, ...



TETRA Radio System Tutorial: Trunking, Frame, Frequency

Following are the two modes in TETRA trunking radio system. Trunked Mode Operation (TMO): In TMO, communications are managed centrally through base stations and the network's core ...

Contact Us

For catalog requests, pricing, or partnerships, please visit:
<https://talbert.co.za>