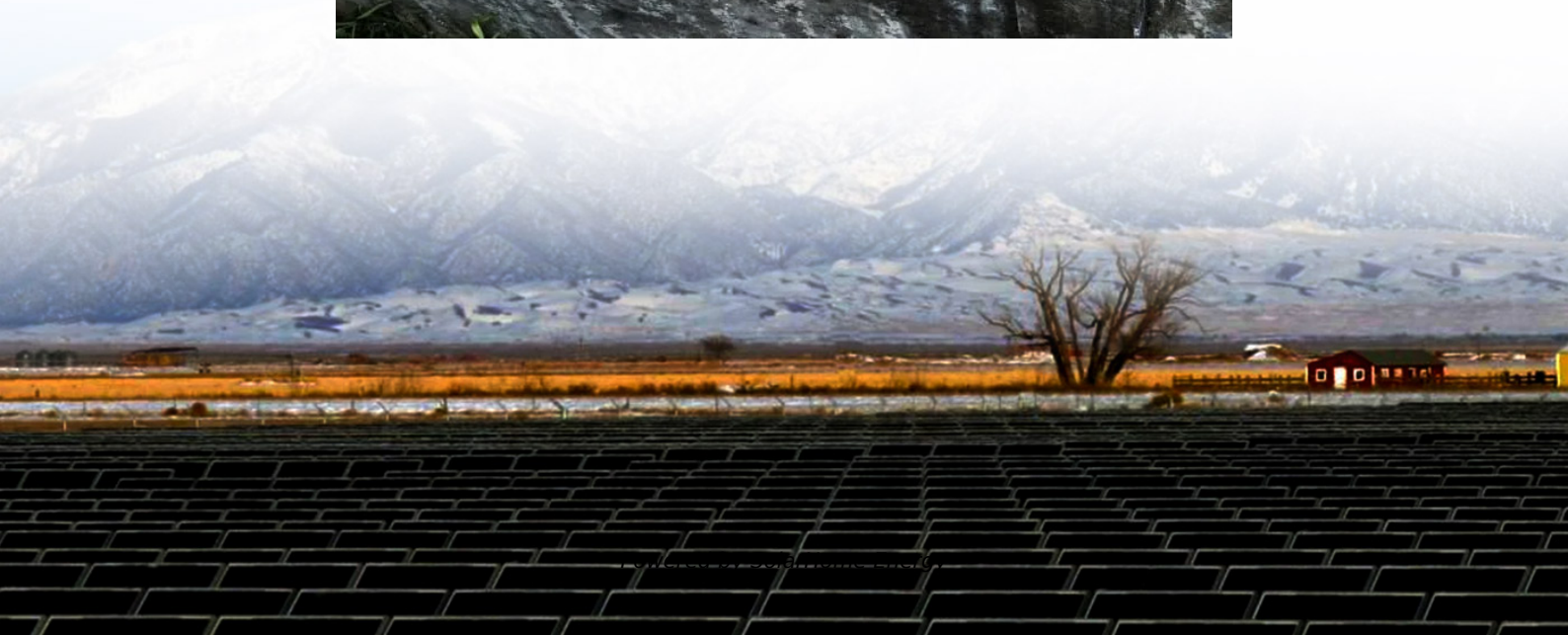


Battery cabinet soft connection





Overview

How to install a battery storage cabinet?

Mounting mechanism – they vary depending on whether the battery storage cabinet is a pole mount, wall mount, or floor mount. The mechanism allows you to install the battery box enclosure appropriately. Racks – these systems support batteries in the enclosure. Ideally, the battery rack should be strong.

What kind of batteries can be stored in a rack mount cabinet?

All-in-one design, store the leading brands of 19" rack mount type lithium batteries, inverters and controllers. DC48V powered air conditioner, heat exchanger or TEC coolers are optional, which can cool down the devices installed inside the cabinet. Battery Storage Space based on the battery specification.

What are the parts of a battery storage cabinet?

Let's look at the most common parts: Frame – it forms the outer structure. In most cases, you will mount or weld various panels on the structure. The battery storage cabinet may have top, bottom, and side panels. Door – allows you to access the battery box enclosure. You can use hinges to attach the door to the enclosure structure.

What should a battery cabinet have?

Handles – provides an easy way to handle the battery cabinet. Battery holding brackets – they ensure the battery is always in a fixed position (no movement). Cooling plates – some have cooling plates that help to control the enclosure temperature. Insulation system – insulation is also a safety measure a battery cabinet should have.

How to build a battery cabinet?

Step 1: Use CAD software to design the enclosure. You must specify all features at this stage. Step 2: Choose suitable sheet metal for the battery box.



You can choose steel or aluminum material. They form the perfect option for battery cabinet fabrication. Step 3: With the dimension from step 1, cut the sheet metal to appropriate sizes.

What is a battery cabinet made of?

The cabinets are made of galvanized steel or aluminium, making them easy to position and providing a long service life. A slide-in racking system allows for easy installation of 19" rackmount style battery modules along with rain protected vents on both sides and on top for passive ventilation.



Battery cabinet soft connection



Lithium-Ion Battery Charging Safety Cabinet

Justrite's Lithium-Ion Battery Charging Cabinet is engineered to charge and store lithium batteries safely, mitigating common risks during charging.

836kWh Liquid Cooled Battery Storage Cabinet ...

The positive (+) and negative (-) terminals of the battery modules are clearly marked and are designed for the convenience of connection, visual check, ...



Battery Cabinet

Lithium Battery Cabinet SmartLi 3.0 Scenario where SmartLi 3.0 lithium battery cabinets are deployed outside the smart module: One integrated UPS can connect to a ...

energy storage lithium battery copper busbar soft connection

Our Barklip ® BK200 IO connectors are an ideal choice to establish the connection between the



battery racks and the busbar. The cable is capable of achieving a direct pluggable connection ...



Battery Enclosures & Cabinets

Battery enclosures and cabinets are a safe way to store batteries and to protect them from the elements as well as providing a line of defense against theft.

Why Energy Storage Soft Connections Are the Secret Sauce of ...

While batteries grab headlines, energy storage soft connections work behind the scenes like a yoga master - flexible, strong, and essential for maintaining flow.



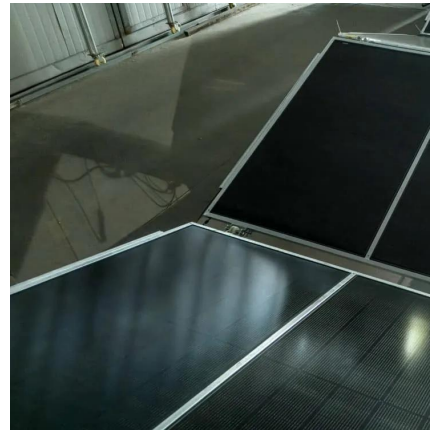
Battery Energy Storage Cabinet Connection Lines: The Unsung ...

Ever wondered what keeps battery energy storage cabinets humming like well-trained choir? Spoiler alert: it's not magic--it's high-quality connection lines.



Battery Cabinets for Uninterrupted Power Supply (UPS)

Battery cabinets are engineered for an uninterrupted power backup source to support the continuous operation of your critical facility.



836kWh Liquid Cooled Battery Storage Cabinet (eFLEX BESS)

The positive (+) and negative (-) terminals of the battery modules are clearly marked and are designed for the convenience of connection, visual check, examine, and repair.

373kWh Liquid Cooled Energy Storage System

The MEGATRONS 373kWh Battery Energy Storage Solution is an ideal solution for medium to large scale energy storage projects. Utilizing Tier 1 LFP battery cells, each battery cabinet is ...



Vertiv™ Liebert® ITA2 Battery Cabinet

When connections are Connect to Communication complete, close the battery Port 2 on the first cabinet in the output breaker(s). previous string to Communication Port 1 on the first cabinet in ...



Complete Guide for Battery Enclosure

Battery cabinets are engineered for an uninterrupted power backup source to support the continuous operation of your critical facility.



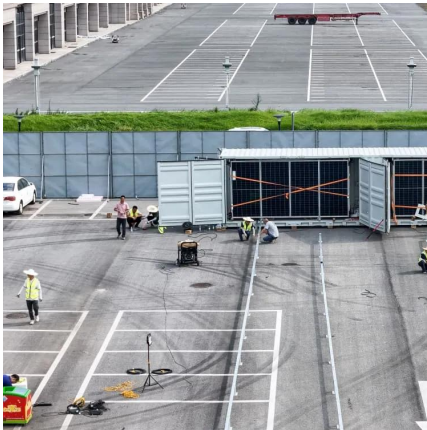
Outdoor UPS

Outdoor UPS Features A wide operating temperature range Optional add-on battery cabinets provide longer back-up times Long life batteries reduce maintenance costs Remote monitoring ...

System Batteries, Sealed Lead-Acid; with Applications ...

Because of their sealed construction, packaging is possible within the system electronics enclosure (see Figure 3). When this is applicable, the quantity of system cabinets and the ...



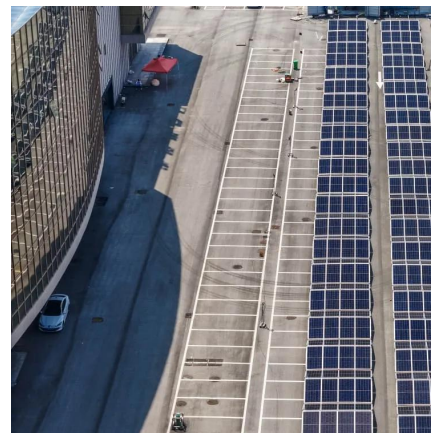


Data center batteries

Calculate the charging voltage based on the battery parameters, and measure the data center batteries output charging voltage, which meets ...

Vertiv™ Liebert® ITA2 Battery Cabinet

Connect a battery cable to Connector B on the first cabinet in the previous string, and to Connector A on the first cabinet in the additional string. Connect the second string in additional ...



UBC80 Battery Cabinet Installation, Operation.

Isolates the battery cabinet from the UPS Divides the 480VDC battery string into two (2) battery strings of 240VDC each. Unlocks the battery cabinet doors to allow access to the cabinet ...

Custom-made copper tray flexible connection flexible soft copper ...

The copper wire soft connection can be used for transformer installation, high and low voltage open cabinet, vacuum electric appliance, closed mother slot, generator and bus, ...



Lithium-ion Storage Cabinets , DENIOS

Our lithium-ion cabinets with 90-minute fire protection offer the safest option for storing modern energy storage systems. The charging cabinets are equipped ...



AZE BESS Cabinets

Outdoor Lithium ion Battery Enclosure mainly provides a stable working temperature and dust-free environment for lithium battery, they are integrated with thermal insulation and equipped ...



Eaton 93PM Integrated Battery Cabinet-Large and Large ...

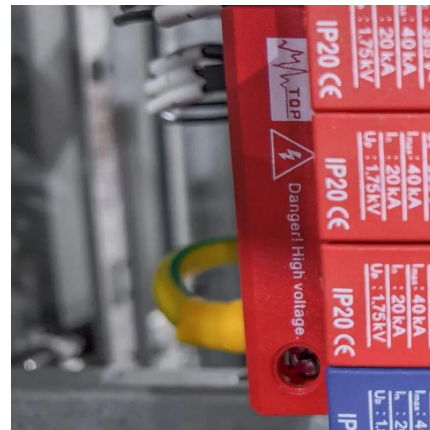
The Eaton® 93PM Integrated Battery Cabinet-Large (IBC-L) and Integrated Battery Cabinet-Large High Rate (IBC-LH) provide extended emergency short-time backup power for 93PM UPS ...





How to do UPS Battery Wiring?

1.2. Install the battery connection Wires. A.
Determine the location of the battery switch, the positive and negative directions of the batteries in the battery ...



Galaxy Lithium-ion Battery Cabinet Installation and Operation ...

This manual provides installation and operation instructions for the Galaxy Lithium-ion Battery Cabinet.

New Energy Storage Cabinet Battery Connection Soft Copper ...

New Energy Storage Cabinet Battery Connection
Soft Copper Bar Multi Layer Copper Foil Soft
Connection Copper Busbar



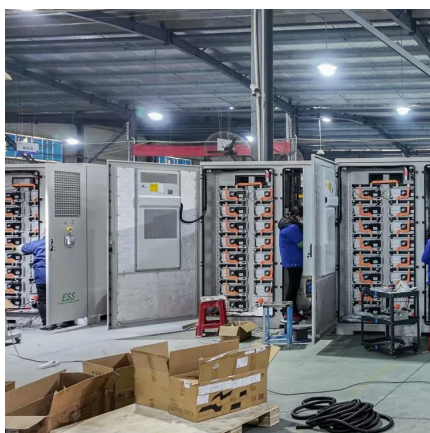
PowerValue 11/31 T

The new battery cabinet is mechanically identical to the previous version but is can host double amount of batteries with flexible configuration: double autonomy in the same footprint.



AZE BESS Cabinets

Outdoor Lithium ion Battery Enclosure mainly provides a stable working temperature and dust-free environment for lithium battery, they are integrated ...



[Complete Guide for Battery Enclosure](#)

Everyone wants a safe, durable, high quality and secure battery enclosure. However, finding the right information about these battery boxes or cabinet is always a ...

Contact Us

For catalog requests, pricing, or partnerships, please visit:
<https://talbert.co.za>