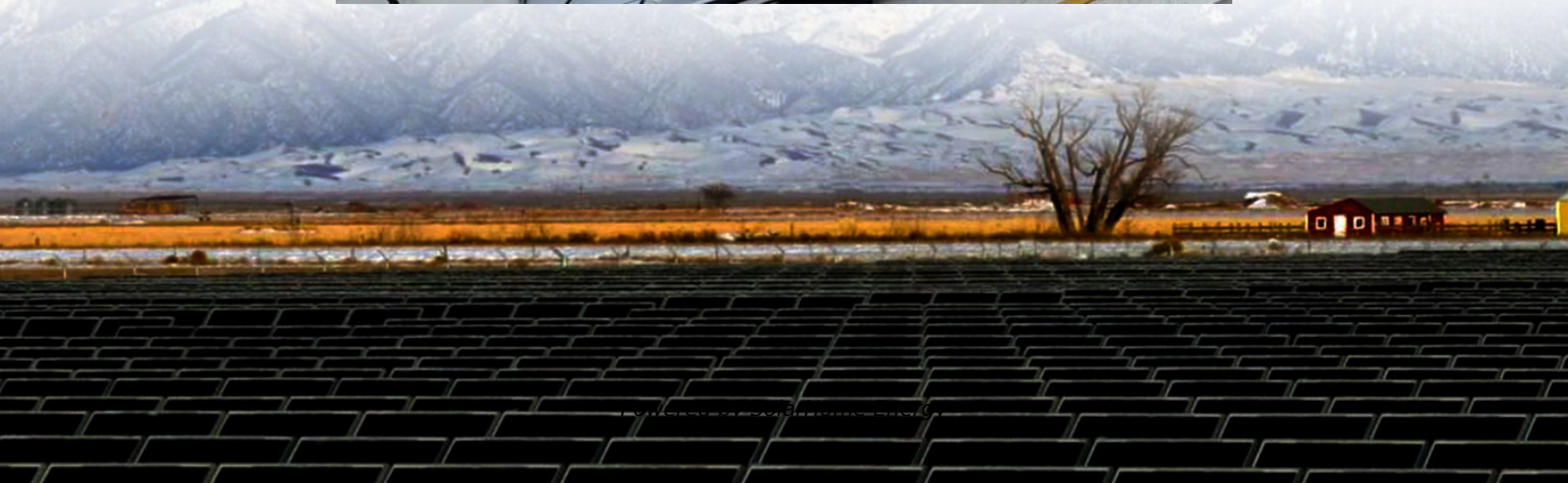


Battery Charging Requirements for Communication Base Stations





Overview

What makes a telecom battery pack compatible with a base station?

Compatibility and Installation Voltage Compatibility: 48V is the standard voltage for telecom base stations, so the battery pack's output voltage must align with base station equipment requirements. Modular Design: A modular structure simplifies installation, maintenance, and scalability.

Which battery is best for telecom base station backup power?

Among various battery technologies, Lithium Iron Phosphate (LiFePO₄) batteries stand out as the ideal choice for telecom base station backup power due to their high safety, long lifespan, and excellent thermal stability.

What are the safety requirements related to batteries & Battery rooms?

Employers must consider exposure to these hazards when developing safe work practices and selecting personal protective equipment (PPE). That is where Article 320, Safety Requirements Related to Batteries and Battery Rooms comes in.

What is a telecom battery?

Telecom batteries play a crucial role in powering equipment, supporting backup systems, and facilitating smooth operations. This comprehensive guide will delve into the types of telecom batteries, their applications, maintenance tips, and the latest advancements in battery technology. 1. Understanding Telecom Batteries 2.

What are the requirements for a battery handling facility?

Floors shall be of acid resistant construction unless protected from acid accumulations. Face shields, aprons, and rubber gloves shall be provided for workers handling acids or batteries. Facilities for quick drenching of the eyes and body shall be provided within 25 feet (7.62 m) of battery handling areas.

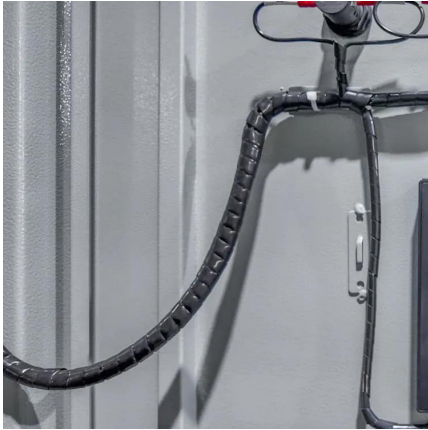


Why do data centers use Telecom batteries?

In data centers, telecom batteries provide backup power to servers and networking equipment. They ensure data integrity and availability during power outages. Cellular networks rely on telecom batteries to maintain service continuity.



Battery Charging Requirements for Communication Base Stations



Battery Ventilation: An HVAC Guide to Forklift Battery ...

Generally, a lithium battery fleet requires less ventilation in battery charging areas; check with manufacturer safe limits and battery maintenance ...

[UPS Batteries in Telecom Base Stations - leagend](#)

When designing a UPS battery system for a telecom base station, engineers must address several critical factors to ensure reliability, efficiency, ...



[Understanding Backup Battery Requirements for ...](#)

Telecom base stations require reliable backup power to ensure uninterrupted communication services. Selecting the right backup battery is ...

[Forklift Battery Charging Station Requirements](#)

Does your forklift battery charging station meet OSHA key requirements to ensure those



operating or working near electric forklifts are safe?



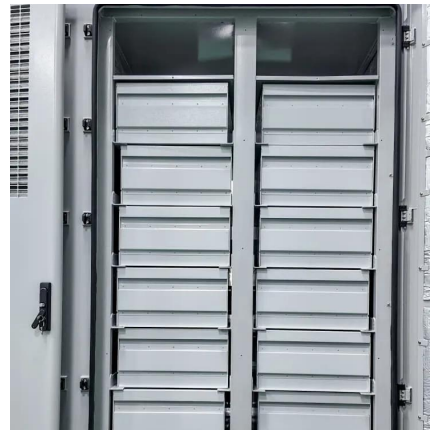
[Comprehensive Guide to Telecom Batteries](#)

This comprehensive guide will delve into the types of telecom batteries, their applications, maintenance tips, and the latest advancements in battery technology.



[EV Charging Standards and Protocols](#)

The Combined Charging System Standard (CCS) covers several aspects of EV charging including AC and DC charging, communications ...



Battery technology for communication base stations

In order to ensure the reliability of communication, 5G base stations are usually equipped with lithium iron phosphate cascade batteries with high energy density and high charge and ...





[eTool : Powered Industrial Trucks \(Forklift\)](#)

Electric-powered forklifts are most commonly used indoors in warehouses. Unlike internal combustion forklifts, electric forklifts are quiet and generally non-polluting but present other ...



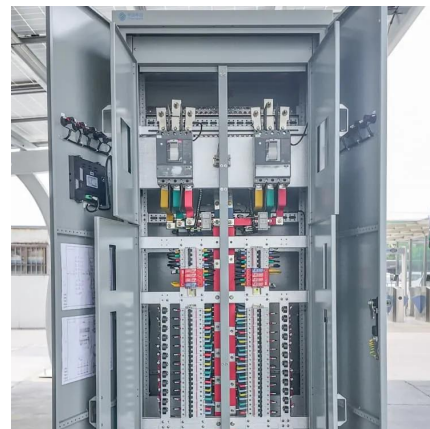
Forklift Charging Station Requirements and Best Practices

Optimize your forklift battery charging stations for safety and efficiency. Learn about OSHA requirements, essential equipment, and best practices.



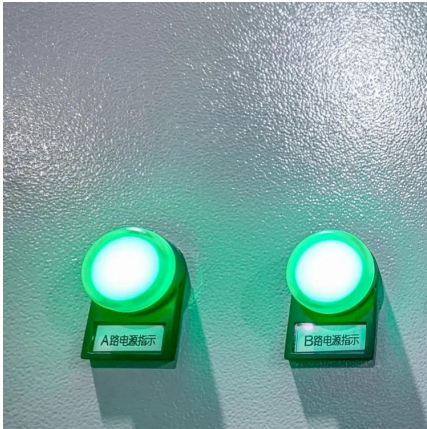
[EV Charging code and standards: A Complete Guide](#)

It also emphasizes a communication protocol between the EV and the charging station for safe power management. Embracing SAE J3068 ensures compatibility and safety across various ...



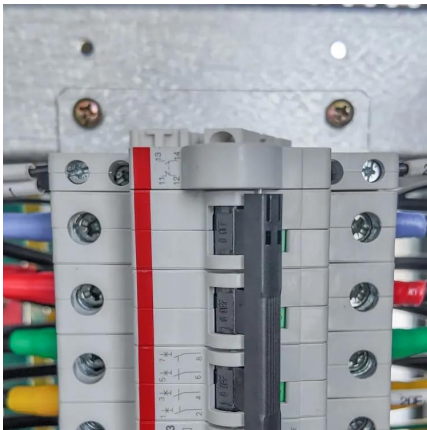
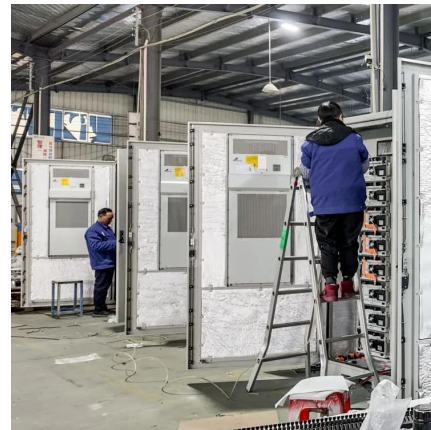
What are the safety requirements for battery charging ...

Battery charging areas require strict safety protocols to prevent fires, explosions, and toxic exposure. Key requirements include adequate ventilation (≥ 12 air ...



§5185. Changing and Charging Storage Batteries.

(b) Battery charging installations shall be located in areas designated for that purpose. Employees assigned to work with storage batteries shall be qualified employees and shall be instructed in ...



Telecom Base Station Backup Power Solution: Design Guide for ...

The battery pack should comply with international safety standards such as UL, CE, and IEC to ensure safe use in telecom base stations. Additionally, it should meet ...

1926.441

Batteries of the unsealed type shall be located in enclosures with outside vents or in well ventilated rooms and shall be arranged so as to prevent the escape of fumes, gases, or ...



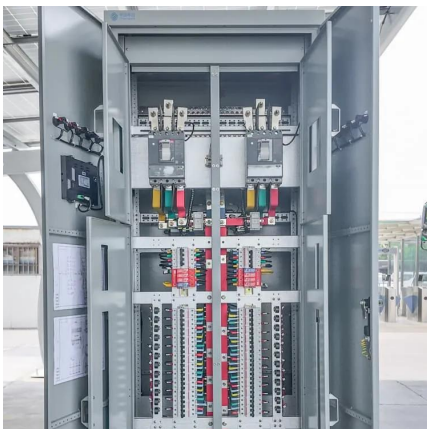
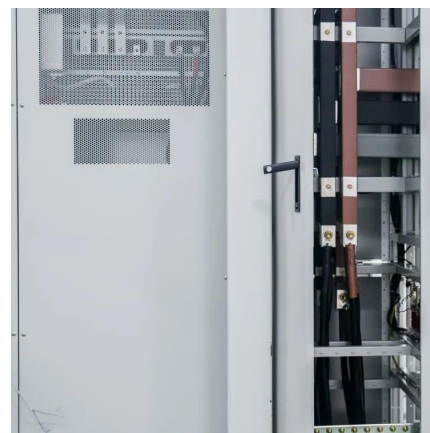


NFPA 70E Battery and Battery Room Requirements , NFPA

Safety requirements for batteries and battery rooms can be found within Article 320 of NFPA 70E

Battery charging technologies and standards for electric vehicles: ...

Recognizing their importance, this paper delves into recent advancements in EV charging. It examines rapidly evolving charging technologies and protocols, focusing on front ...

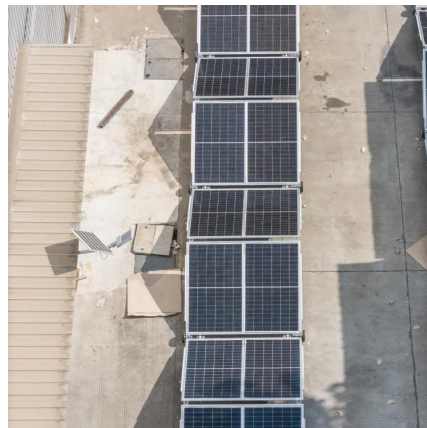


Telecom Base Station Backup Power Solution: Design ...

The battery pack should comply with international safety standards such as UL, CE, and IEC to ensure safe use in telecom base stations. ...

Charging Infrastructure Guidelines and Standards for Electric ...

2.1 Any person seeking to set up a Public Charging Station may apply for connectivity and he shall be provided connectivity on priority by the Distribution Company ...



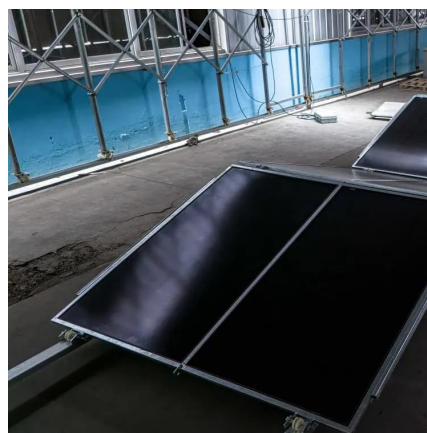
What Are the Critical Aspects of Telecom Base Station Backup ...

Telecom base station backup batteries are essential for ensuring uninterrupted communication by providing reliable, long-lasting power during outages. Critical aspects ...



Use of Batteries in the Telecommunications Industry

ATIS Standards and guidelines address 5G, cybersecurity, network reliability, interoperability, sustainability, emergency services and more



Selection and maintenance of batteries for communication base stations

Focused on the engineering applications of batteries in the communication stations, this paper introduces the selections, installations and maintenances of batteries for communication ...





Lithium battery solution for power supply guarantee system of

I. Background of the Communication Base Station Support System The communication base station support system is the general term for a series of facilities and ...



Selection and maintenance of batteries for communication base ...

Focused on the engineering applications of batteries in the communication stations, this paper introduces the selections, installations and maintenances of batteries for communication ...

What Are the Requirements for Forklift Battery ...

Forklift battery charging stations are critical for maintaining electric forklifts, ensuring they operate efficiently and safely. Understanding the ...



UPS Batteries in Telecom Base Stations - leagend

When designing a UPS battery system for a telecom base station, engineers must address several critical factors to ensure reliability, efficiency, and longevity. The first step in ...



of Charging Station.

Electric Vehicle Charging Infrastructure (EVCI) is a network of charging stations catering to diverse charging requirement and includes components such as EVSE, connection to ...

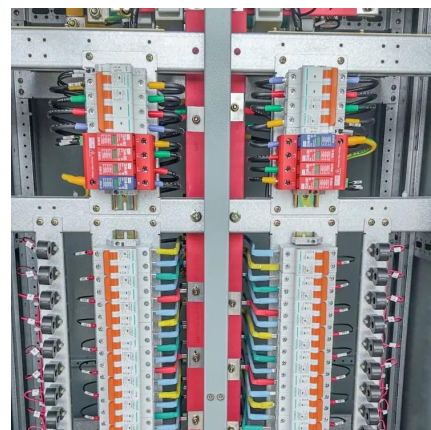


Understanding Backup Battery Requirements for Telecom Base Stations

Telecom base stations require reliable backup power to ensure uninterrupted communication services. Selecting the right backup battery is crucial for network stability and ...

[EV Charging Standards and Specifications in India](#)

The Open Charge Point Protocol (OCPP) is a common protocol used for communication between different charging stations and service ...





Contact Us

For catalog requests, pricing, or partnerships, please visit:
<https://talbert.co.za>