

Base stations are network communication equipment





Overview

In the area of wireless computer networking, a base station is a radio receiver/transmitter that serves as the hub of the local wireless network, and may also be the gateway between a wired network and the wireless network. It typically consists of a low-power transmitter and .

A base station is a critical component in a telecommunications network. A fixed transceiver that acts as the central communication hub for one or more wireless mobile client devices. In the context of cellular networks, it facilitates wireless communication between mobile devices and the core network.



Base stations are network communication equipment

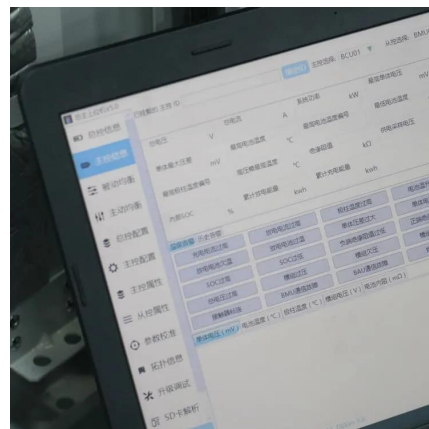


What Is A Base Station?

A base station is a piece of equipment that facilitates wireless communication between devices and a network. It contains the necessary hardware and software to transmit ...

Energy-efficiency schemes for base stations in 5G heterogeneous

In today's 5G era, the energy efficiency (EE) of cellular base stations is crucial for sustainable communication. Recognizing this, Mobile Network Operators are actively prioritizing EE for ...



Base Station's Role in Wireless Communication Networks

A base station is the component of the network that handles communication between devices and the network, while a cell tower is the physical structure that houses the antennas and ...

Base Stations

Base stations form a key part of modern wireless communication networks because they offer some crucial advantages, such as wide ...



GSM in Wireless Communication

Mobile Station (MS): MS comprises user equipment and software needed for communication with a mobile network. Mobile Station (MS) = Mobile Equipment (ME) + ...



The Base Station in Wireless Communications: The ...

Base stations are an essential element of wireless communication systems, enabling smooth and stable connections between users and the ...



What is a Base Station Cabinet

A base station cabinet protects telecom equipment, ensures stable power, cooling, and security, and supports 4G, 5G, IoT, and emergency ...





Base Stations and Cell Towers: The Pillars of Mobile Connectivity

Base stations and cell towers are critical components of cellular communication systems, serving as the infrastructure that supports seamless mobile connectivity. These ...



Base station

In the area of wireless computer networking, a base station is a radio receiver/transmitter that serves as the hub of the local wireless network, and may also be the gateway between a wired ...



Satellite Communication Protocols and Ground Stations

In the intricate realm of satellite communication protocols and ground stations, the orchestration of data transmission and reception unfolds ...



Optimised configuration of multi-energy systems considering the

Optimised configuration of multi-energy systems considering the adjusting capacity of communication base stations and risk of network congestion



What is a base station?

Base stations are the backbone of modern telecommunications networks, providing the essential infrastructure for wireless communication. They enable ...



5G Network Equipment Manufacturers

The 5G next-generation base transceiver station or gNodeB (gNB) connects subscriber user equipment (UE) devices to the mobile network. Many of the ...

Basestation

A base station (BS) is defined as a fixed communication facility that manages radio resources for one or more base transceiver stations (BTSSs), facilitating radio channel setup, frequency ...





Base Station's Role in Wireless Communication Networks

A base station is a critical component of wireless communication networks. It serves as the central point of a network that connects various devices, such as smartphones, tablets, and computers.

Base Station Definition

In a computer networking context, a base station broadcasts a wireless signal that allows other devices to join a local network. However, the term is also commonly used in the ...



Base station

OverviewComputer networkingLand surveyingWireless communicationsSee also

In the area of wireless computer networking, a base station is a radio receiver/transmitter that serves as the hub of the local wireless network, and may also be the gateway between a wired network and the wireless network. It typically consists of a low-power transmitter and wireless router.

What is a base station?

A base station serves as a central connection point for a wireless device to communicate. It further connects the device to other networks or devices, usually through ...



Base Transceiver Stations (BTS)

A Base Transceiver Station, commonly known as BTS, is a critical piece of equipment in wireless communication networks. It serves as the primary point of contact between user devices, such ...



BS (Base Station)

A base station (BS) is a key component of modern wireless communication networks, providing the interface between wireless devices ...



What is a base station?

Base stations are the backbone of modern telecommunications networks, providing the essential infrastructure for wireless communication. They enable mobile devices to connect to the ...



BS (Base Station)

A base station (BS) is a key component of modern wireless communication networks, providing the interface between wireless devices and the network infrastructure.

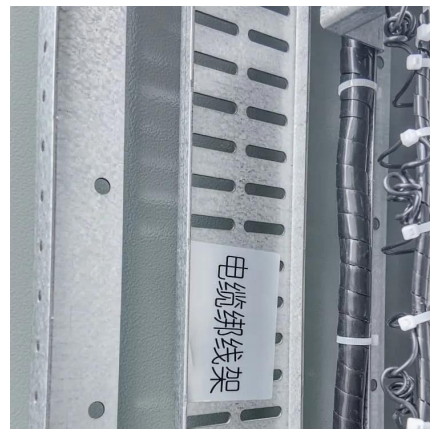


[The Architecture of Modern Ground Stations](#)

The intricate network of components comprising modern ground stations is a testament to the precision and complexity required in satellite ...

[What Are Base Station Antennas? Complete Guide](#)

In modern telecommunications systems, the base station antenna stands out as an undeniable and crucial component to facilitate our daily communication from voice calls to ...



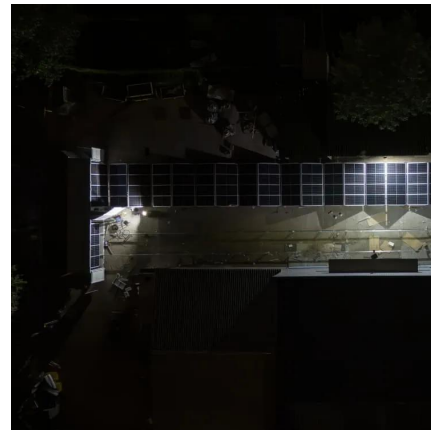
Base Stations and Cell Towers: The Pillars of Mobile ...

Base stations and cell towers are critical components of cellular communication systems, serving as the infrastructure that supports seamless ...



[What Are Base Station Antennas? Complete Guide](#)

In modern telecommunications systems, the base station antenna stands out as an undeniable and crucial component to facilitate our daily ...



Base Station Definition

In a computer networking context, a base station broadcasts a wireless signal that allows other devices to join a local network. However, the ...

Base Stations

Base stations form a key part of modern wireless communication networks because they offer some crucial advantages, such as wide coverage, continuous communications and ...





What is Telecommunication Base Station , China Hop

What is telecommunication base station, let's learn about communication base stations. China telecom equipment supplier.

11.0 Ground Data Systems and Mission Operations

Unlike a traditional ground network that goes direct from a "client" satellite to a ground station on the ground, space relay networks consist of communication satellites that ...



Contact Us

For catalog requests, pricing, or partnerships, please visit:
<https://talbert.co.za>