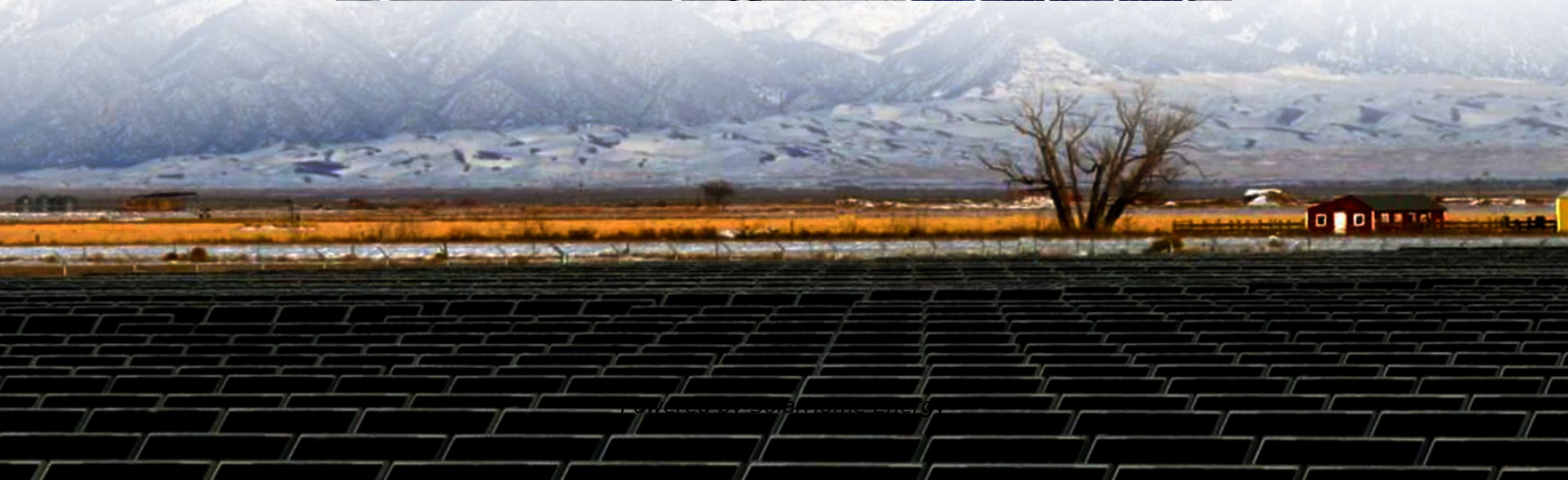


Are there any requirements for the battery that comes with the inverter





Overview

Does a solar inverter need a battery?

In addition to compatibility, the capacity of both the inverter and the battery plays a vital role in the overall performance of the solar energy system. The inverter's capacity, measured in kilowatts (kW), should be sufficient to handle the maximum load of the appliances it will support.

What kind of batteries do inverters use?

Its modular and stackable battery packs provide the storage alone but are "inverter agnostic," which is the industry's way of saying they work with anyone. Its most popular battery is the 3.8 kWh battery module, which can be stacked and nestled next to your inverter on the wall next to your electrical panel.

Does a battery pack need an inverter?

Here's a breakdown of this info for some of the biggest storage companies in the market today: Batteries or battery packs without an integrated inverter must be paired with an external, third-party inverter to connect to your solar panel system and home.

Do inverters and batteries need to match?

The inverter and batteries must match in terms of voltage, capacity, and power output. If you are using a 12V battery, then the input voltage of the inverter must match the battery voltage. If the specifications of the battery and the inverter do not match, the system will not operate stably and may even damage the equipment.

Should I buy an inverter-less battery?

You can purchase an inverter-less battery if you already have a hybrid inverter installed in your solar system, otherwise you can buy a battery that comes with its own dedicated inverter. 3. Your Inverter Is Outdated or Nearing



the End of Its Lifespan.

Do inverters need to be connected to batteries?

Connecting inverters to batteries is an important part of an off-grid power solution or backup power system, and the right connections ensure that the system runs efficiently.



Are there any requirements for the battery that comes with the inv



Understanding Battery Specifications and How They ...

There are two good ways to go about determining battery needs. First, you can determine how long your appliance will run on your battery. The second ...

What Are Inverter Batteries and How Do They Function?

Choosing the Right Inverter Battery When selecting an inverter battery, consider: Power Requirements: Calculate your energy needs to ...



The ultimate guide to solar inverter and battery ...

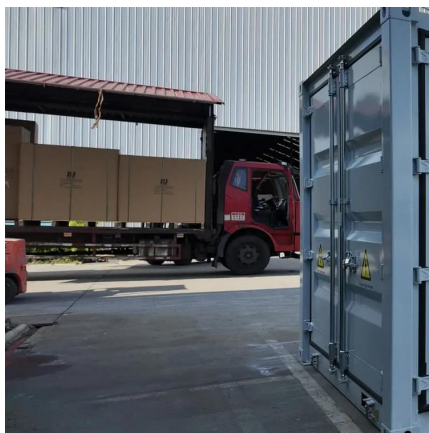
In addition to compatibility, the capacity of both the inverter and the battery plays a vital role in the overall performance of the solar energy ...

Calculate Battery Size For Any Size Inverter (Using ...

So I have made it easy for you, use the calculator below to calculate the battery size for 200 watt,



300 watt, 500 watt, 1000 watt, 2000 ...



How to Safely Connect a Battery to an Inverter: A Step-by-Step ...

Learn how to safely connect your batteries to your inverter with our guide. Avoid common wiring mistakes to optimize performance and extend system life.

[A comprehensive guide to inverter voltage](#)

How to choose the inverter voltage? To select the best inverter for your application, it is important to match the inverter's input and output voltage ...



What Is An Inverter

However, for devices like medical equipment or high-end electronics, a pure sine wave inverter is recommended for its clean and stable power output. Furthermore, examine ...



The ultimate guide to solar inverter and battery integration

In addition to compatibility, the capacity of both the inverter and the battery plays a vital role in the overall performance of the solar energy system. The inverter's capacity, ...



Emergency Lighting Inverter Installation and Operation Manual

The Central Lighting Inverter meets UL 924 requirements for emergency lighting system applications and provides the security of 90-minutes of battery backup power. It is suitable for ...

[Does your battery come with a built-in inverter?](#)

Home batteries are paired with inverters to correctly store and discharge electricity. Learn which brands come with this technology built-in.



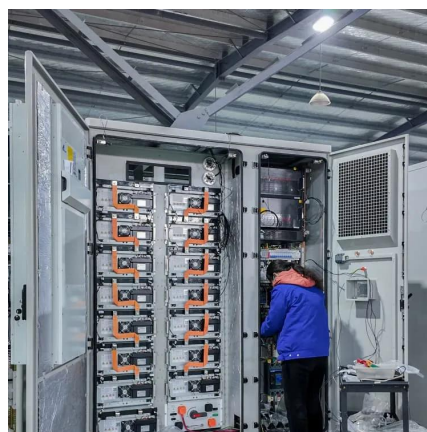
How to Safely Connect a Battery to an Inverter: A ...

Learn how to safely connect your batteries to your inverter with our guide. Avoid common wiring mistakes to optimize performance and extend ...



Does your battery come with a built-in inverter?

Home batteries are paired with inverters to correctly store and discharge electricity. Learn which brands come with this technology built-in.



Ensuring Your Battery is Compatible with Your Inverter

It's important to select a battery that can meet the discharge rate demands of your inverter to avoid damage and ensure optimal performance.

...

SolarEdge Home Battery FAQs

A: Yes, when the Home Battery has been installed with an Energy Hub inverter and the Backup Interface has also been installed and configured then backup is available to power your whole ...





[What Size Inverter Do I Need For My Camper?](#)

There are various factors that determine the size of the inverter you need for your camper. For instance, the number of appliances you need to ...

How to Ensure the Inverter and Battery You Purchase Are ...

Ensuring compatibility between your inverter and battery is crucial for efficient energy storage and system performance. Here's a guide on how to make sure your equipment works well together.



Inverter and Battery Integration: Does an Inverter Come with a ...

Most household inverters work well with batteries to provide a reliable energy supply, but a battery is not always required. Homeowners often choose their inverters and ...

The RV Inverter Used To Scare Me. Then I Found ...

Shutterstock What's an RV inverter, and do you need one? How do you choose the right inverter for your RV, and how do you install it? We ...



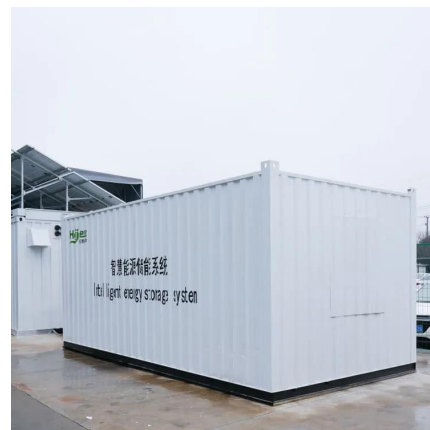
Understanding Battery Specifications and How They Apply to your Inverter

There are two good ways to go about determining battery needs. First, you can determine how long your appliance will run on your battery. The second method is to figure out how much ...



Explanation of Inverter DC Capacitance and Inrush Current

What is Inrush Current? During initial DC power connection to the inverter (a.k.a. cold start), the capacitor is in a discharged state and acts as a short circuit, until it accumulates some electric ...



Battery vs Inverter: Choosing the Right Power Source

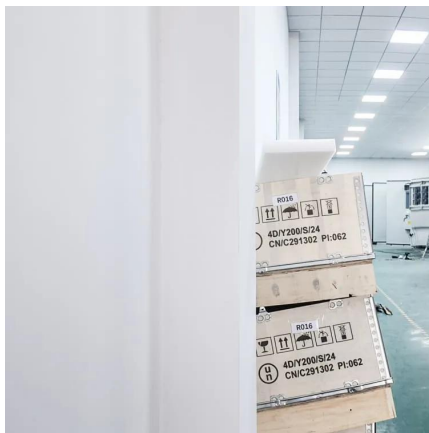
In conclusion, both batteries and inverters have their advantages and disadvantages when it comes to efficiency. Batteries excel in storing power for future use, ...





Does a Solar Inverter Need to be Grounded? - Solair ...

There is only one way to find out: by indulging in a discussion on the same. For instance, does a solar inverter need to be grounded? Are there any benefits of ...



[Does your battery come with its own inverter?](#)

Batteries or battery packs that come without an integrated inverter must be paired with an external, third-party inverter in order to connect to your solar panel system and home.

Inverter and Battery Integration: Does an Inverter Come with a Battery?

Most household inverters work well with batteries to provide a reliable energy supply, but a battery is not always required. Homeowners often choose their inverters and ...



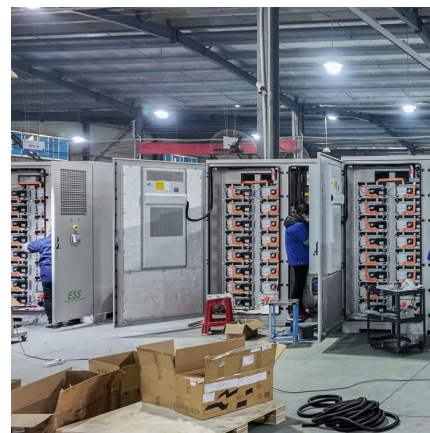
[Do I Need a New Inverter If I Buy a Battery?](#)

Different battery types require different inverter solutions. Some batteries come with their own inverters (AC-coupled), while others require a hybrid inverter (DC-coupled).



The inverter-simplified!

The inverter runs off the batteries in your Airstream. The factory-installed batteries are designed to support the Airstream for a day or two of "typical" needs. So realistically, if you ...

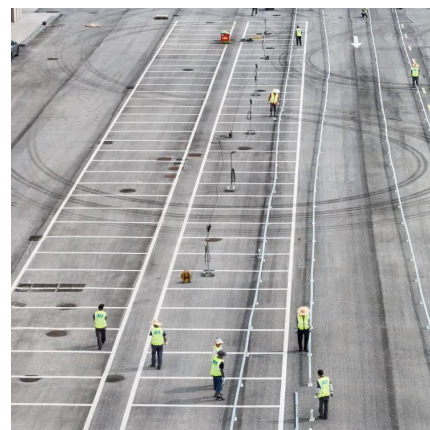


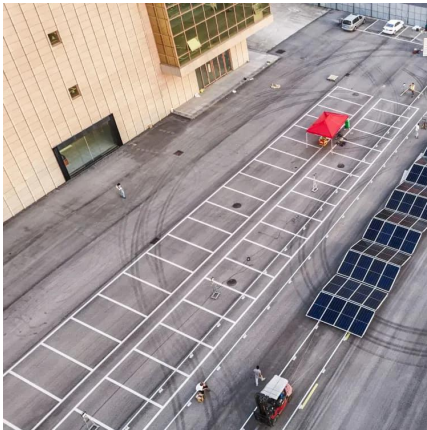
Frequently asked questions about inverters , Mastervolt

Frequently Asked Questions about Inverters How much battery capacity do I need with an inverter? As a rule of thumb, the minimum required battery capacity for a 12-volt system is ...

Ultimate Guide to Battery in Inverter: Choose & Maintain Right

Discover how to choose, maintain, and maximize your battery in inverter for reliable backup power. Expert tips on inverter batteries, lifespan, and safety included!





[Do I Need a New Inverter If I Buy a Battery?](#)

Different battery types require different inverter solutions. Some batteries come with their own inverters (AC-coupled), while others require a hybrid inverter ...

Ensuring Your Battery is Compatible with Your Inverter

It's important to select a battery that can meet the discharge rate demands of your inverter to avoid damage and ensure optimal performance. Consider the physical size and ...



[Comprehensive Guide to Inverters: Types, ...](#)

There are also ON-line versions of such inverters, though the technology is often pseudo-online. Grid-Tie Inverter (online): This includes an ...

Contact Us

For catalog requests, pricing, or partnerships, please visit:
<https://talbert.co.za>