

680 Photovoltaic Solar Panel Size





Overview

A 680kW system using 370W panels will require about 3,224.2 square meters of roof to be installed. Each 370W panel measures about 1.75m x 1m. 680kW solar power systems are mostly suitable for Large industrial energy users or solar farms. This size of solar power system is classed as "Large Scale".



680 Photovoltaic Solar Panel Size



[680kW Solar System Information - Facts & Figures](#)

Did you know that 680kW solar power systems can consist of a different number of panels depending on the size of the solar panels? Here are some common panel sizes which could ...

[Solar Panel Sizes and Wattage Explained](#)

Their tool estimates the size and cost of a PV system based on your home energy needs. Enter your yearly kWh usage, solar hours per day, and the percentage of your ...



680 Watt Solar panels' range of prices, dimensions, sizes, voltage

680 Watt Solar panels' range of prices, dimensions, sizes, voltage output, specifications datasheets Ranges of information Voltage: 35.8V ~ 41.49V Amp: 16.39A ~ 18.16A

680 Photovoltaic panel size

60-Cell Solar Panels. The typical size of a solar panel, such as the 60-cell variant, is designed in a 6' x 10' configuration and has dimensions



of approximately 3.25 feet by



Understanding Solar Panel Dimensions In 2025: A Complete Size ...

Explore the most common solar panel dimensions in 2025, including residential and commercial sizes. Learn how solar panel size dimensions affect power, installation, and ...



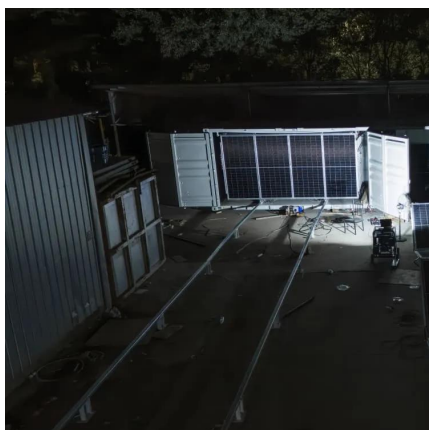
[HJT Bifacial Double Glass 680W 690Wp 700Watt ...](#)

In order to create the ultimate cost-effective product, SunEvo Solar launched a new generation of ultra-high efficiency HJT solar modules, the Evo 6 Pro ...



Canadian Solar 680W Solar Panel 132 Cells Bifacial CS7N-TB-AG-680

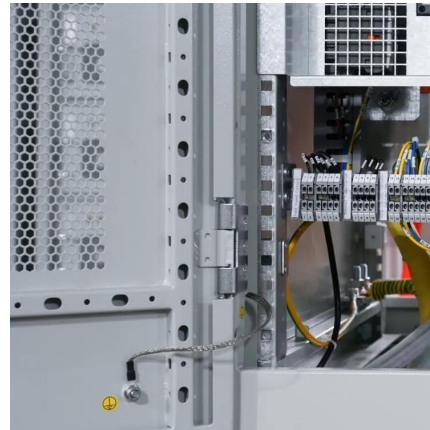
The solar cells of CS7N-680TB-AG are half the size of those found in standard panels. Major advantages include reduced power consumption, extended life and enhanced ...





More Energy , N Type TOPCON 680-700W , Solar Panel ...

More Energy GmbH Solar Panel Series N Type TOPCON 680-700W. Detailed profile including pictures, certification details and manufacturer PDF.



[Solar Panel Sizes and Wattage Explained](#)

Their tool estimates the size and cost of a PV system based on your home energy needs. Enter your yearly kWh usage, solar hours per day, ...

[Standard Solar Panel Sizes And Wattages \(100W ...](#)

To bridge that gap of very useful knowledge needed, we have compared and averaged the sizes of 100-watt to 500-watt solar panels available on the ...



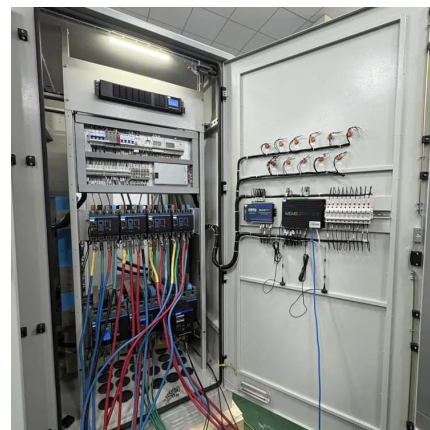
Conext™ Core XC

The Conext Core XC is a series of central inverters designed for high efficiency and flexibility for any PV panel type and installation. The Conext Core XC Series has peak ...



Solar Panels

Unlock the power of clean energy with Qcells solar panels. Explore our cutting-edge technology and sustainable solutions for a greener and cleaner tomorrow.



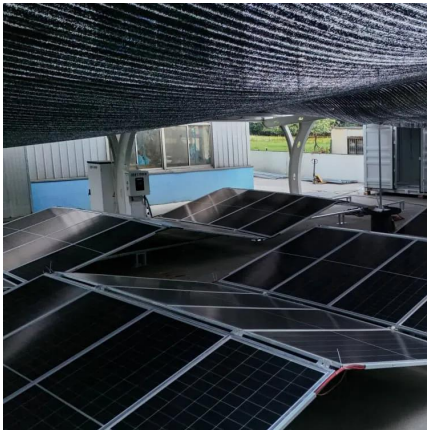
Standard Solar Panel Sizes And Wattages (100W-500W ...

To bridge that gap of very useful knowledge needed, we have compared and averaged the sizes of 100-watt to 500-watt solar panels available on the market. The goal here is to get to the ...

[Solar Panel Sizes and Wattage: A Comprehensive ...](#)

Explore our comprehensive guide on solar panel sizes and wattage to make informed decisions. Learn to choose the right solar power ...





[Solar Panel Sizes & Dimensions \(SA\): Simply ...](#)

Understanding different solar panel sizes may seem a bit overwhelming at first glance, but it's absolutely essential if you're looking to make a smart ...

HJT Bifacial Double Glass 680W 690Wp 700Watt Photovoltaic Solar Panel

In order to create the ultimate cost-effective product, SunEvo Solar launched a new generation of ultra-high efficiency HJT solar modules, the Evo 6 Pro monocrystalline N-type HJT bifacial ...



[Trina Tier 1 Mono TOPCon Vertex Series 675Wp ...](#)

Our company is specialized in producing Trina Tier 1 Mono TOPCon Vertex Series 675Wp 680Wp 685Wp 690Wp 695Wp 700Wp PV Module Bifacial, We ...



Solar Panels Size & Weight (Including Commercial ...

Individual PV solar cells are thin slices of silicon that typically measure 6 inches long by 6 inches wide. Multiple solar cells are assembled ...



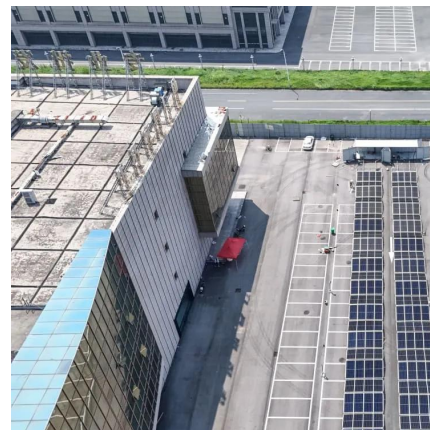
Canadian Solar 680W Solar Panel 132 Cells Bifacial CS7N-TB ...

The solar cells of CS7N-680TB-AG are half the size of those found in standard panels. Major advantages include reduced power consumption, extended life and enhanced ...



Guide to Solar Panel Sizes & Dimensions (August 2025)

Discover which solar panel sizes and dimensions are the most common in the UK, as well as which size is the best for your home.



680 -Quasar BI

The 670-685W Modules from CREDENCE is of Bifacial Glass to Glass with EPE/POE as encapsulating material. Rang if modules upto 685W are BIS and ...





12BB Half Cut Cells Monocrystalline Solar Panels ...

We are best 12BB Half Cut Cells Monocrystalline Solar Panels 680W 690W 695W 700W Solar Module suppliers, we supply best 700w solar panels for sale.



Photovoltaic panel sizes: a comprehensive guide to ...

A guide to choosing the ideal photovoltaic panel size to optimize space, energy efficiency, and costs, from compact solutions to large-format ...

Solar Panel Dimensions Sizes and Wattage

The size of solar panels is an essential criterion to consider when planning a photovoltaic solar installation. By choosing the right panel size, you ...



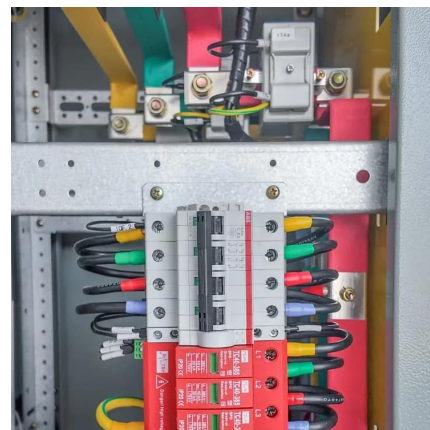
Solar Panels Size & Weight (Including Commercial Dimensions)

Individual PV solar cells are thin slices of silicon that typically measure 6 inches long by 6 inches wide. Multiple solar cells are assembled together to form a rectangular ...



[More Energy , N Type TOPCON 680-700W , Solar ...](#)

More Energy GmbH Solar Panel Series N Type TOPCON 680-700W. Detailed profile including pictures, certification details and manufacturer PDF.



[Complete guide to solar panel size and weigh](#)

The 96-unit solar panels have a structure of 8*12, and their dimensions are 2200*1100mm. 96-unit solar panels have a larger size, and their power is also larger, about ...

[680kW Solar System Information - Facts & Figures](#)

The 96-unit solar panels have a structure of 8*12, and their dimensions are 2200*1100mm. 96-unit solar panels have a larger size, and ...





Contact Us

For catalog requests, pricing, or partnerships, please visit:
<https://talbert.co.za>