

# **5g base stations consume more power**





## Overview

---

The 5G NR standard has been designed based on the knowledge of the typical traffic activity in radio networks as well as the need to support sleep states in radio network equipment. By putting the base st.

Are 5G base stations causing more energy consumption?

However, Li says 5G base stations are carrying five times the traffic as when equipped with only 4G, pushing up power consumption. The carrier is seeking subsidies from the Chinese government to help with the increased energy usage.

How much power does a 5G base station use?

“A 5G base station is generally expected to consume roughly three times as much power as a 4G base station. And more 5G base stations are needed to cover the same area,” -IEEE Spectrum, 5G’s Waveform Is a Battery Vampire.

Is 5G more energy efficient than 4G?

Although the absolute value of the power consumption of 5G base stations is increasing, their energy efficiency ratio is much lower than that of 4G stations. In other words, with the same power consumption, the network capacity of 5G will be as dozens of times larger than 4G, so the power consumption per bit is sharply reduced.

Will MIMO increase the energy consumption of 5G base stations?

As a result, there are many more hardware components per base station. Björnson believes this will probably increase the total energy consumption of 5G base stations compared to 4G. But as massive MIMO technology develops, its energy efficiency may also improve over time.

Does China Mobile have a 5G base station?

China Mobile has tried using lower cost deployments of MIMO antennas, specifically 32T32R and sometimes 8T8R rather than 64T64R, according to MTN. However, Li says 5G base stations are carrying five times the traffic as



when equipped with only 4G, pushing up power consumption.

Why does 5G use so much power?

The main factor behind this increase in 5G power consumption is the high power usage of the active antenna unit (AAU). Under a full workload, a single station uses nearly 3700W. This necessitates a number of updates to existing networks, such as more powerful supplies and increased performance output from supporting facilities.



## 5g base stations consume more power

---



### Energy-efficiency schemes for base stations in 5G heterogeneous

In today's 5G era, the energy efficiency (EE) of cellular base stations is crucial for sustainable communication. Recognizing this, Mobile Network Operators are actively prioritizing EE for ...

### Carbon emissions of 5G mobile networks in China

Here we develop a large-scale data-driven framework to quantitatively assess the carbon emissions of 5G mobile networks in China, where over 60% of the global 5G base ...



### 5G base stations use a lot more energy than 4G base stations: MTN

A typical 5G base station consumes up to twice or more the power of a 4G base station, writes MTN Consulting Chief Analyst Matt Walker in a new report entitled " Operators ...

### Energy-saving control strategy for ultra-dense network base stations

Aiming at the problem of mobile data traffic surge in 5G networks, this paper proposes an



effective solution combining massive multiple-input multiple-output techniques ...



## A technical look at 5G energy consumption and performance

To understand this, we need to look closer at the base station power consumption characteristics (Figure 3). The model shows that there is significant energy consumption in the ...

## The 5G Dilemma: More Base Stations, More Antennas--Less Energy?

According to recent research, the ultra-lean design that 5G networks are capable of will make it possible to put more components to sleep for a longer time, reducing energy ...



## How much power does 5G consume?

One 5G base station is estimated to consume about as much power as 73 households (6), and 3x as much as the previous generation of base stations (5), (7). When base stations, data centers ...





## The 5G Dilemma: More Base Stations, More ...

According to recent research, the ultra-lean design that 5G networks are capable of will make it possible to put more components to sleep for a ...



## **What is a 5G Base Station?**

As the world continues its transition into the era of 5G, the demand for faster and more reliable wireless communication is skyrocketing. Central to ...

## **5G Base Station**

The main energy consumption of 5G base stations is concentrated in the four parts of base station, transmission, power supply and computer ...



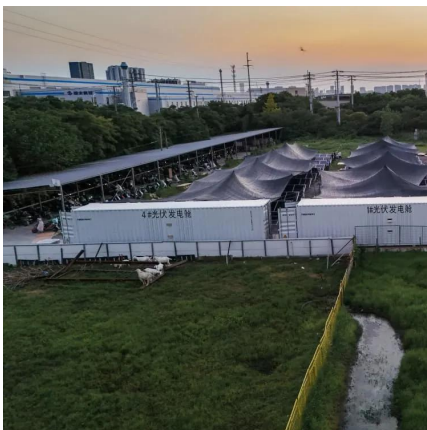
## **Improving energy performance in 5G networks and beyond**

In 5G networks, digital processing in base stations can increase more than 300 times compared with early Long Term Evolution (LTE) products, primarily due to an increasing ...



## 5G base stations use a lot more energy than 4G base ...

A typical 5G base station consumes up to twice or more the power of a 4G base station, writes MTN Consulting Chief Analyst Matt Walker in a ...

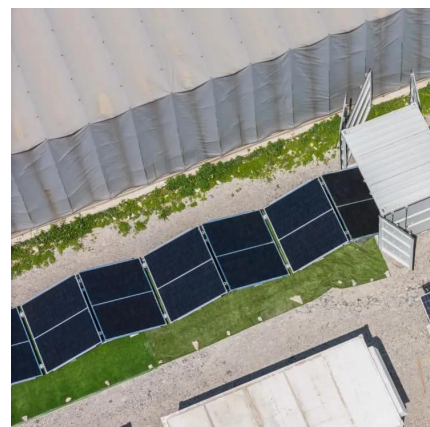


## Why does 5g base station consume so much power and how to ...

5G base stations use high power consumption and high RF signals, which require more signal processing for digital and electromechanical units, and also put greater pressure ...

## Energy Consumption of 5G, Wireless Systems and ...

"A 5G base station is generally expected to consume roughly three times as much power as a 4G base station. And more 5G base stations are needed to cover ...





## Network energy consumption modeling and performance

5G is by design the most energy efficient cellular generation to date. As 5G continues to evolve, new features and solutions to further improve energy performance are ...

## 5G Transmit Power and Antenna radiation

To keep the power density per MHz similar to LTE systems, the 100MHz 3.5GHz spectrum will require 5x 80 W, which is not easy to be achieved. 5G trials ...



## 5G Base Station Growth: How Many Are Active? , PatentPC

A typical 5G base station consumes three times more power than a 4G station. This is due to the need for higher frequencies, greater bandwidth, and more antennas to ensure connectivity.

## Energy Consumption of 5G, Wireless Systems and the Digital ...

"A 5G base station is generally expected to consume roughly three times as much power as a 4G base station. And more 5G base stations are needed to cover the same area," -IEEE ...





## How much power does 5G consume?

One 5G base station is estimated to consume about as much power as 73 households (6), and 3x as much as the previous generation of base stations ...



## What is the Power Consumption of a 5G Base Station?

These 5G base stations consume about three times the power of the 4G stations. The main reason for this spike in power consumption is the addition of massive MIMO and ...



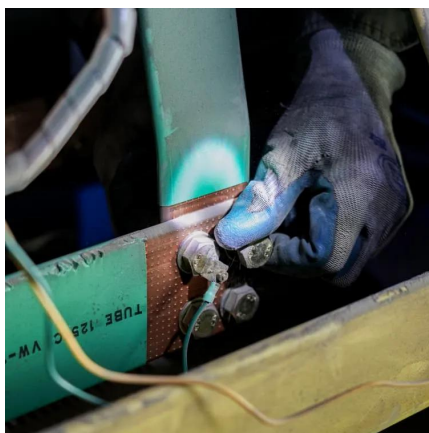
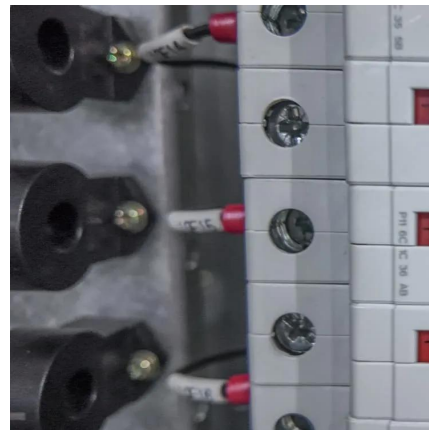
## [How Much Power Does 5G Base Station Consume?](#)

The Silent Energy Crisis in Mobile Networks Have you ever wondered how much energy our hyper-connected world is consuming? 5G base stations, the backbone of next-gen ...



## Final draft of deliverable D.WG3-02-Smart Energy Saving of ...

Change Log This document contains Version 1.0 of the ITU-T Technical Report on "Smart energy saving of 5G base station: Based on AI and other emerging technologies to forecast and ...



## (PDF) 5G Energy Efficiency Overview

The new strategies should not only focus on wireless base stations, which consumes most of the power, but it should also take into consideration the other power ...

## How Much Power Does 5G Base Station Consume?

Have you ever wondered how much energy our hyper-connected world is consuming? 5G base stations, the backbone of next-gen connectivity, now draw 3-4 times more power than their 4G ...



## 5G base station saves energy and reduces consumption

In 5G communications, base stations are large power consumers, and about 80% of energy consumption comes from widely dispersed base stations. It is predicted that by ...



### Front Line Data Study about 5G Power Consumption

The power consumption of a single 5G station is 2.5 to 3.5 times higher than that of a single 4G station. The main factor behind this increase in 5G power consumption is the high power ...



### **What is 5G Energy Consumption?**

5G Base Station Power Consumption: With each base station carrying at least 5X more traffic and operating over more frequency bands, 5G base station power consumption is at least twice ...

### **Why does 5g base station consume so much power ...**

5G base stations use high power consumption and high RF signals, which require more signal processing for digital and electromechanical units, ...





### **Does 5G use more battery power?**

One major factor which affects battery life of devices operating on 5G is the proximity to base stations. 5G-enabled devices continuously ...

## **Contact Us**

---

For catalog requests, pricing, or partnerships, please visit:  
<https://talbert.co.za>