

48v lithium battery can be connected to inverter





Overview

Using a 24V inverter on a 48V battery is not recommended. The inverter is designed to operate at 24 volts, and connecting it to a 48V source can lead to overvoltage, potentially damaging both the inverter and the connected devices. How to choose a lithium battery inverter?

Exceeding this limit can damage the battery. **Operating Voltage:** The inverter's operating voltage range should be compatible with the nominal voltage of your lithium battery bank (e.g., 12V, 24V, 48V). **Ideal Power Consumption:** Look for an inverter with an efficiency rating that suits your needs.

Can a 24V inverter run a 48v battery?

Explore the basics of using a 24V inverter on a 48V battery setup to understand its compatibility and potential advantages and disadvantages: **Inverter Functionality:** Inverters convert DC power from batteries into AC power, crucial for running household devices off-grid or during power outages.

Do inverters work with batteries?

Battery Voltage: Batteries store energy and come in different voltages like 12V, 24V, or 48V, determining their capacity and output. **Compatibility Considerations:** Matching voltages between inverters and batteries is generally recommended for optimal performance.

Are hybrid inverters compatible with lithium batteries?

Compatibility is the first and foremost consideration when setting up communication between a lithium battery and a hybrid inverter. Not all inverters are compatible with all lithium batteries. Therefore, it is crucial to ensure that the inverter you choose is designed to work with the specific type of lithium battery you plan to use.

What are the specifications of a lithium battery inverter?



Inverter Specifications: Charging Current: The inverter's charging current must match your lithium battery's recommended charging current. Exceeding this limit can damage the battery. **Operating Voltage:** The inverter's operating voltage range should be compatible with the nominal voltage of your lithium battery bank (e.g., 12V, 24V, 48V).

What is a lithium ion battery for a home inverter?

Lithium-ion batteries offer a more consistent discharge rate, ensuring that your inverter operates smoothly and efficiently. A lithium-ion battery for a home inverter can significantly enhance your home's energy storage capabilities.



48v lithium battery can be connected to inverter



Lithium Battery 48V For Inverters: Which One Should You Buy?

The 48v lithium battery is a popular choice for inverters because of its high power density. It's also a good option if you need long-term storage capacity or wants to use the ...

How To Connect Batteries In Series and Parallel

To connect batteries in a series, a jumper wire connects a battery's negative terminal to another battery's positive terminal. This leaves ...



Compatibility of Lithium-Ion Batteries with Existing ...

Learn how to seamlessly integrate lithium-ion batteries with ...

Battery and SolarEdge Home Hub Inverter Compatibility

2Hardwired RS485 communication from the inverter to the batteries is required. 3Inverter



has a max output from the batteries of 5kW.
While multiple batteries can be connected, the ...



Can A 48V Inverter Connect To A 24V Battery? Compatibility And ...

No, a 48V inverter cannot work with a 24V battery. It needs a 48V DC input to operate correctly. If you provide only 24V, the inverter may not start or will shut down often. To ...

[Do I need a special inverter for Lithium battery?](#)

Operating Voltage: The inverter's operating voltage range ...



Hybrid Inverter and Lithium Batteries: Setup Guide and Best ...

set up communication between lithium batteries and a hybrid inverter with our detailed step-by-step guide. Ensure optimal performance and longevity of your energy storage system by ...



Batteries with different voltages 48v + 51.2v

Hi there all As mentioned in my other post re bad installers: My mate was supplied with 2 x batteries (same brand) but one is a 48v and the other a 51.2v unit. Issue is SOC calc ...



Can a 48V Inverter Work with a 24V Battery? - A Comprehensive ...

No, a 48V inverter cannot directly work with a 24V battery. Inverters are designed to work with specific input voltage levels, and a 48V inverter is built to operate with a 48V ...

How Do You Calculate the Appropriate Inverter Size for a 48V Battery

To calculate the appropriate inverter size for a 48V battery system, you need to determine the total wattage of the devices you plan to power. The formula is: Inverter Size ...



Parallel 2 48V lifepo4 batteries advice

About a month I turned up a Growatt 12k inverter with a 48V 4s4s configured EVE 280AH battery bank. Each 4S battery has a Daly 250A 4s ...



Can A 48V Inverter Connect To A 24V Battery? Compatibility And ...

Connecting a 48V inverter to a 24V battery results in the inverter failing to operate effectively, potentially leading to damage to the inverter or the battery. Incompatibility in ...

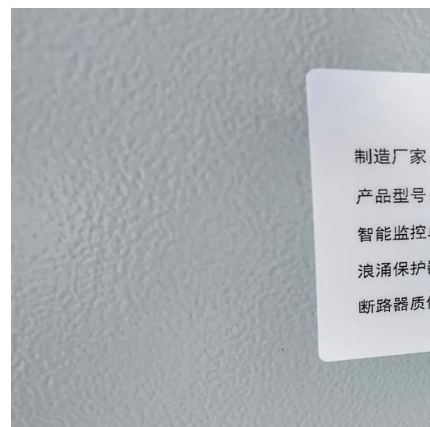


Understanding the Basics of Connecting Lithium ...

Ensure that the battery's voltage is within the range that the inverter supports. Most inverters are designed for 12V, 24V, or 48V systems, so the ...

Hybrid Inverter and Lithium Batteries: Setup Guide ...

set up communication between lithium batteries and a hybrid inverter with our detailed step-by-step guide. Ensure optimal performance and longevity of your ...



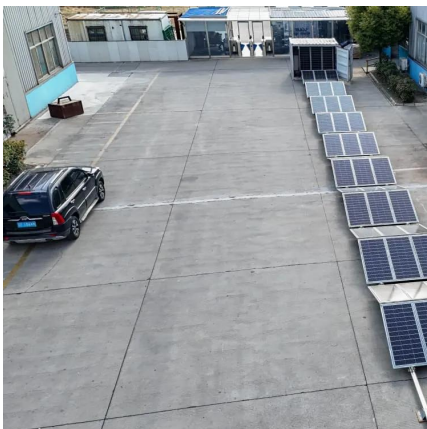
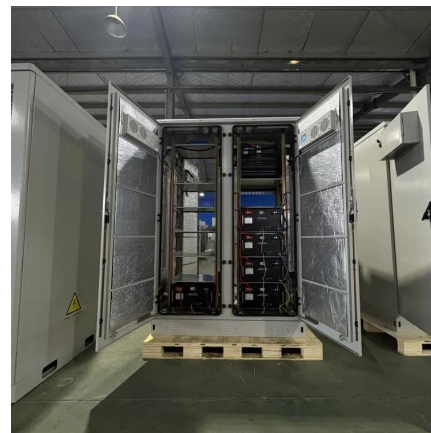


[Can I Use a 24V Inverter on a 48V Battery?](#)

No. Using a 24V inverter on a 48V battery is not recommended. The inverter is designed to operate at 24 volts, and connecting it to a 48V source can lead to overvoltage, ...

Can Lithium Batteries Work With Any Type of Inverter?

When setting up solar energy systems or home energy storage, a common question arises: Are lithium batteries compatible with all inverters? ...



Questions regarding inverters and batteries. , MyBroadband Forum

Hi, I want to purchase a Inverter and battery but due to budget constraints I don't want to install solar panels at this stage. I am however an idiot regarding many issues ...

[Axpert Inverter Guide , Hubble Energy](#)

Configure your Axpert inverter with Hubble Energy batteries using our detailed guide, covering settings, communication and troubleshooting. Learn more now!



Can Lithium Batteries Work With Any Type of Inverter?

When setting up solar energy systems or home energy storage, a common question arises: Are lithium batteries compatible with all inverters? The short answer is no - proper ...



Understanding the Basics of Connecting Lithium Batteries to Inverters

Ensure that the battery's voltage is within the range that the inverter supports. Most inverters are designed for 12V, 24V, or 48V systems, so the battery should match this ...



[Full Guide] How Many Batteries Do I Need for a 5KW ...

Discover how many lithium batteries you need for a 5kW inverter to ensure your solar system operates efficiently around the clock.





Complete Guide to Wiring Batteries in Series - PowMr

3 days ago · Wiring batteries in series is a common method used in solar power systems, RVs, golf carts, and other DC setups. 12V batteries are the most popular, offering flexibility for ...



GP-LIFEPO4-100 / Lithium Batteries (LiFePO4) / How to : Wiring ...

Find wiring instructions for lithium batteries with tips on secure connections and parallel connection notes.

[Do I need a special inverter for Lithium battery?](#)

Operating Voltage: The inverter's operating voltage range should be compatible with the nominal voltage of your lithium battery bank (e.g., 12V, 24V, 48V). Ideal Power ...



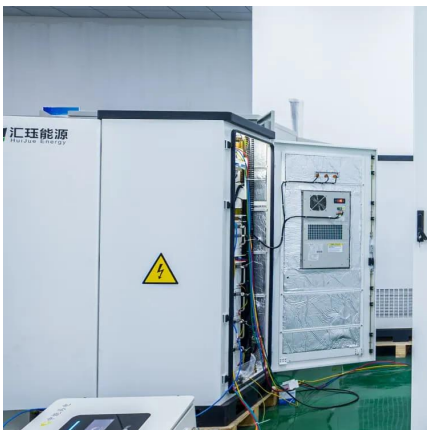
[Can I Use a 24V Inverter on a 48V Battery?](#)

Using a 24V inverter on a 48V battery is not recommended. The inverter is designed to operate at 24 volts, and connecting it to a 48V source can lead to overvoltage, ...



Combining Solar, wind into 48v off grid system.

The setup I have 2400 watts of solar, going into a smart solar 150/100 mppt. this charges 324 ah 48v lithium battery bank. This feeds into 3kva multiplus. I have a constant load ...



Compatibility of Lithium-Ion Batteries with Existing Inverters

Learn how to seamlessly integrate lithium-ion batteries with existing inverters for efficient and reliable power solutions. Maximize energy storage with Invertek Energy.

Contact Us

For catalog requests, pricing, or partnerships, please visit:
<https://talbert.co.za>