

220v inverter vs 380





Overview

The primary difference lies in their input voltage level. Three-phase 220V inverter is designed for small motors with low rated voltage, while three-phase 380V inverter is suitable for large motors with high rated voltage, which directly reflects their different positioning in the motor supporting. What is the difference between 220V and 380V?

It is clarified that 220V is typically the phase-to-neutral voltage, while 380V is the phase-to-phase voltage in a three-phase system. Inverters can be designed for single-phase (230V) or three-phase (400V) outputs, with configurations such as star (Y) and delta (Δ) affecting the voltage levels.

What is the difference between 220V and 380V three-phase power supplies?

Join this discussion. The discussion centers on the differences between 220V and 380V three-phase power supplies, particularly in relation to inverters and their configurations. It is clarified that 220V is typically the phase-to-neutral voltage, while 380V is the phase-to-phase voltage in a three-phase system.

What is DC to AC 380V 3 phase inverter?

These dc to ac 380v 3 phase inverter are available in distinct voltage capacities such as 230VAC, 220V/230V/240V for converters, and 100V/110V/120V/220V/230V/240V for the inverter product line. These dc to ac 380v 3 phase inverter are also equipped with input reverse polarity protection features too.

Are 380V and 220V the same thing?

380V and 220V can refer to the same electrical potential difference. 380V between wires, 220V from one wire to neutral. So you should be able to connect the 220V setting between one phase wire and the neutral (if a neutral is available). But, please look carefully at the instructions, because these things do vary, and one type of connection may not be allowed.

Can a 380V motor run on 220V?



Woodworking. One thing to remember is that if after wiring a 380V motor to run on 220V it runs at lower RPMs, then it could overheat from the lack of air circulation. Interests: I'm a knife maker that got into leather to make sheaths. I'm finding I enjoy the leather side of things every bit as much as knife making.

What is 380V power?

380V: Usually associated with three-phase power systems, which consist of three live wires (three phases) and a neutral wire. Three-phase power is more efficient for powering large motors and industrial equipment because it provides a constant power output without significant voltage drops.

Applications:



220v inverter vs 380

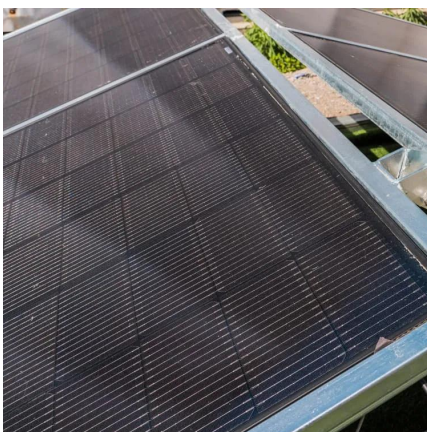
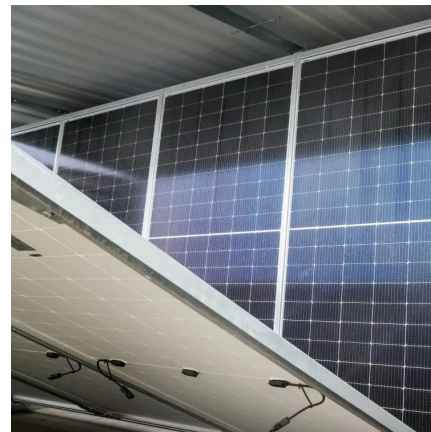


[Inverter single phase 220V to 3 phase 380V - ...](#)

3 - Use a single-phase 220V inverter to three-phase 380V in any case? Factories that cannot pull 3-phase 380V electricity to use for machines whose motors ...

The difference between inverter output three-phase 220v and ...

In short, there are certain differences between three-phase 220V and three-phase 380V inverters in terms of voltage level, power capacity, motor drive, energy consumption, ...



The difference between three-phase 220v and three-phase 380v inverter

In practical applications, the input voltage of the inverter usually has two specifications: three-phase 220V and three-phase 380V. This article will analyze the differences between these two ...

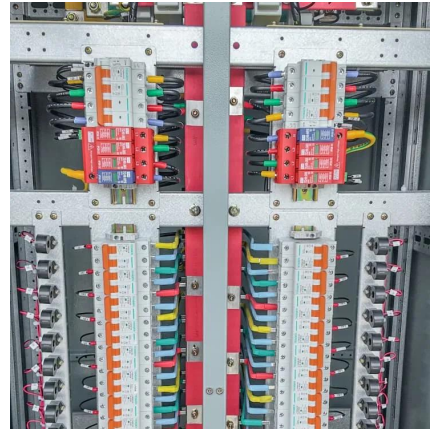
Difference Between Single-Phase and Three-Phase Inverters: 220V vs ...

...

Curious about the differences between single-



phase and three-phase inverters? ? This video breaks down the key features of two seemingly similar yet complet



What Is The Differences Between 220V and 380V Used in Air ...

In areas where both voltages are used, transformers may be required to step down (for 220V) or step up (for 380V) voltage to match specific equipment requirements.

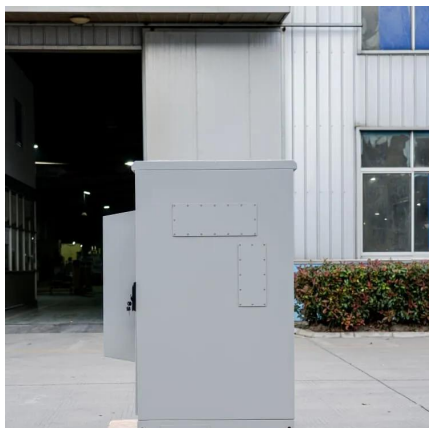
Difference Between Single-Phase and Three-Phase Inverters: ...

Curious about the differences between single-phase and three-phase inverters? ? This video breaks down the key features of two seemingly similar yet complet



What are the advantages of single-phase 220v to three-phase 380v inverter?

The single-phase 220v to three-phase 380v inverter is based on the ordinary inverter, which converts the power frequency AC 220V power supply into a DC power supply ...





380 vs 220 trifase

di solito si utilizzando inverter monofase 220V in entrata e trifase 220V per alimentare quei motori, perciò in uscita avrei tre fasi da 220V ora quello che mi chiedo, ...

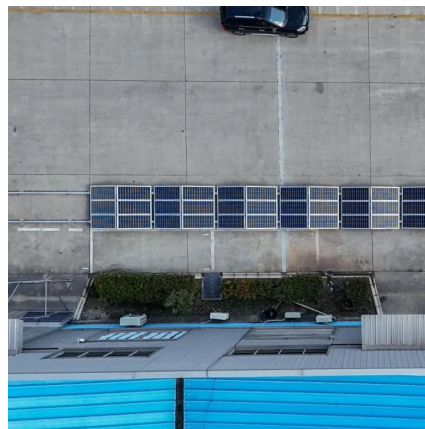


What Is The Differences Between 220V and 380V ...

In areas where both voltages are used, transformers may be required to step down (for 220V) or step up (for 380V) voltage to match ...

phase

I have a circuit that uses three-phase electric power (without neutral). There is an old transformer in this circuit (see image). It converts 220 ...



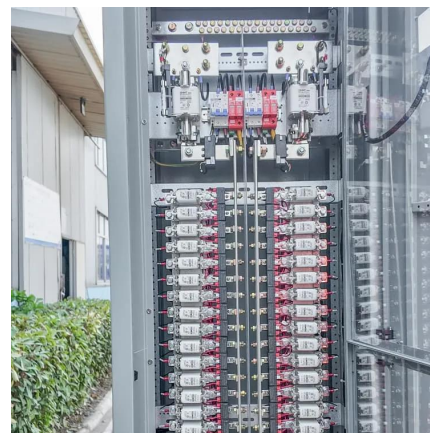
Is It Cheaper to Run a 110V or 220V Air Conditioner?

Energy Consumption and Efficiency Differences for 110V vs. 220V Air Conditioners From an energy consumption perspective, whether an air conditioner runs on a 110V or 220V circuit, ...



Mengapa ada perbedaan voltase pengenal 230/400 dg 220/380

Pertanyaan dari customer kepada specifier team : Saya menemukan beberapa standar untuk voltase pengenal tegangan rendah ada yang tertulis 220/380 dan ada yang ...



Key differences between three-phase 220V and three-phase 380V inverters

In this paper, we will discuss the nine core differences between three-phase 220V and three-phase 380V inverters, to help readers more fully understand the application ...

The difference between three-phase 220v and three-phase 380v inverter

The main difference between three-phase 220V and three-phase 380V inverters is their input voltage rating. The input voltage of a three-phase 220V inverter is 220V, while the input ...





[Difference Between 220V & 380V 3-Phase Power ...](#)

Understanding the difference between 220V and 380V three-phase power supplies, including how inverters handle these voltage levels. Learn ...

What are the differences between 380VAC, 400VAC and 415VAC ...

For many years, mainland Western Europe has used a mains 3 phase electricity supply nominally rated at 380V AC 50Hz while the UK used 415V AC 50Hz. Currently, all Western European 3 ...



[what voltage are you running? 220V / 230V / 240V?](#)

Something came to mind recently, and I was rather curious, what output voltages do people run on their inverters? The default, which should be 230V, or do you adjust it down ...

The Application and Selection Guide of 220V Single Phase to ...

When purchasing a 220V single phase to 380V 3 phase converter, users need to consider multiple factors to ensure they select the product most suitable for their needs. Here ...

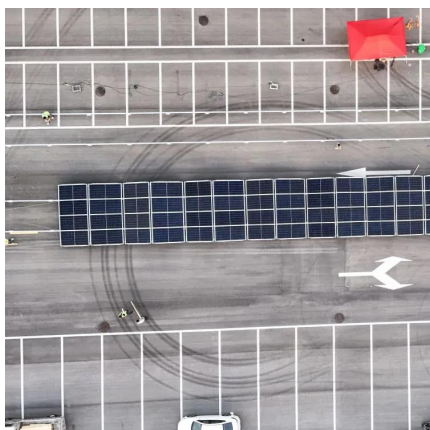


Che differenza c'è tra corrente 220 e 380?

Tensioni in un sistema elettrico La tensione di linea è divisa per la radice quadrata di 3.
Differenze tra sistemi monofase e trifase La differenza principale è data dalla tensione.
Utilizzo del ...

220V input 380V output VFD

Our 220V single phase to 380V three phase VFDs offer a wide range of benefits over traditional three phase power sources.



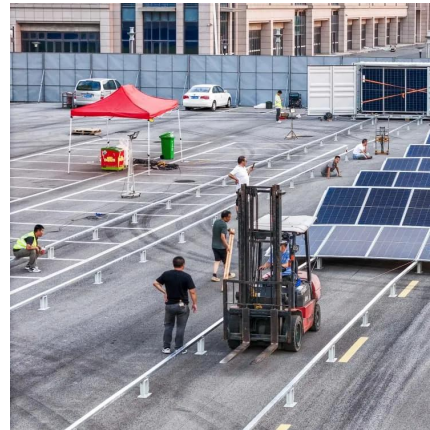
The difference between 380v and 220v power supply voltage

2. According to regulations, the neutral point of the 380-volt (three-phase) civil power supply should not be grounded at the entrance (it is grounded at the transformer end. This grounding ...



380V 3 phase motor on 220v 3 phase

I keep seeing the "380V 3 phase motor off 220V single phase" and that spooks the heck out of me. That inverter may be a way to boost the voltage, but the cost is prohibitive, so ...



Running a 3ph motor rated for 380v star on 220v delta

Are you sure about your inverter? I guess it's 220V L-N and 380V L-L, not vice versa. The motor seems to be a 660V/380V type from your description.

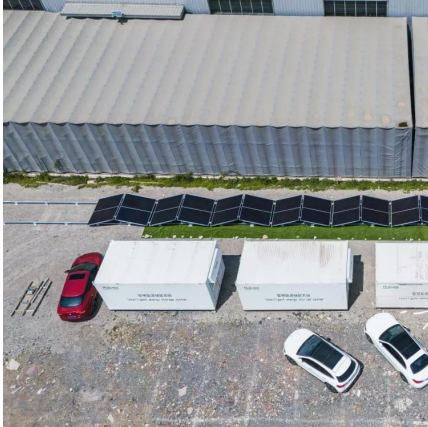
The difference between inverter output three-phase 220v and ...

The inverter is an electrical device that converts AC power into AC power with adjustable frequency. It is widely used in industrial automation, motor drive and other fields. In ...



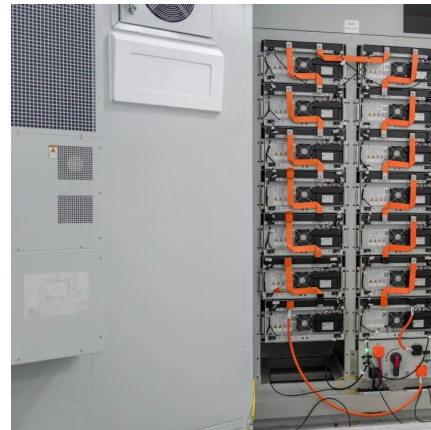
The difference between three-phase 220v and three-phase 380v ...

In practical applications, the input voltage of the inverter usually has two specifications: three-phase 220V and three-phase 380V. This article will analyze the differences between these two ...



Top Strategies for Optimizing Your Operations with the Best ...

In this blog post, we'll dive into some top strategies to help you optimize your operations using the best Inverter 220V 380V VFDs. We'll also chat about how to effectively use these devices for ...



Difference Between 220V & 380V 3-Phase Power Supplies: ...

Understanding the difference between 220V and 380V three-phase power supplies, including how inverters handle these voltage levels. Learn about voltage between ...

Top Strategies for Optimizing Your Operations with the Best Inverter

In this blog post, we'll dive into some top strategies to help you optimize your operations using the best Inverter 220V 380V VFDs. We'll also chat about how to effectively use these devices for ...





instalación eléctrica 220 vs 380

-El hecho de solicitar 380 trifasica doméstica digamos que 10Kw con icp de 16A creo no conlleva necesariamente alta fiscal, salvo que por ser un local comercial los de EON ...

Contact Us

For catalog requests, pricing, or partnerships, please visit:
<https://talbert.co.za>